



**Water Monitoring Result at C7 - Windsor House
Mid-Flood Tide**

Date	Time	Weather Condition	Sampling Depth		Water Temperature			pH			Salinity			DO Saturation			DO			Turbidity			Suspended Solids	
					°C			-			ppt			%			mg/L			NTU			mg/L	
					Value	Average		Value	Average		Value	Average		Value	Average		Value	Average		Value	Average		Value	Average
28/10/2015	18:00	Cloudy	Middle	-	27.30	27.30	27.25	8.08	8.08	8.09	31.86	31.86	31.86	79.7	81.6	80.2	5.29	5.42	5.33	3.14	3.11	3.17	3	2.50
	18:01		Middle	-	27.20	27.20		8.09	8.10		31.86	31.86		80.4	79.1		5.34	5.25		3.21	3.23		2	
30/10/2015	10:08	Fine	Middle	-	27.40	27.40	27.40	8.26	8.26	8.27	31.17	31.17	31.18	73.3	72.3	73.2	4.87	4.80	4.86	5.94	5.81	5.77	7	6.50
	10:10		Middle	-	27.40	27.40		8.27	8.27		31.18	31.18		73.8	73.2		4.91	4.86		5.66	5.66		6	
2/11/2015	12:05	Fine	Middle	-	27.20	27.20	27.20	8.26	8.26	8.28	31.96	31.96	31.97	84.3	85.5	84.6	5.60	5.68	5.62	8.99	9.07	9.03	2	2.00
	12:07		Middle	-	27.20	27.20		8.30	8.30		31.97	31.97		84.7	84.0		5.63	5.58		9.03	9.02		2	
4/11/2015	11:35	Fine	Middle	-	27.00	27.00	27.05	8.29	8.29	8.30	32.45	32.45	32.44	74.0	75.3	75.5	4.90	4.99	5.01	7.64	7.63	7.63	4	4.50
	11:37		Middle	-	27.10	27.10		8.31	8.31		32.43	32.43		77.3	75.5		5.13	5.01		7.62	7.61		5	
6/11/2015	-	Fine	Middle	-	-	-		-	-		-	-		-	-		-	-		-	-		-	
	-		Middle	-	-	-		-	-		-	-		-	-		-	-		-	-		-	
9/11/2015	-	Fine	Middle	-	-	-		-	-		-	-		-	-		-	-		-	-		-	
	-		Middle	-	-	-		-	-		-	-		-	-		-	-		-	-		-	
11/11/2015	17:58	Fine	Middle	-	26.00	26.00	25.95	8.29	8.29	8.30	32.44	32.44	32.48	81.4	78.8	78.7	5.51	5.33	5.33	11.15	11.19	<u>11.59</u>	7	7.50
	18:00		Middle	-	25.90	25.90		8.31	8.31		32.52	32.52		77.4	77.2		5.24	5.23		12.03	12.00		8	
13/11/2015	18:03	Cloudy	Middle	-	25.10	25.10	25.05	8.35	8.35	8.35	32.60	32.61	32.61	79.1	79.3	79.5	5.42	5.44	5.46	6.46	6.34	6.28	3	3.50
	18:04		Middle	-	25.00	25.00		8.35	8.35		32.61	32.61		79.5	80.1		5.46	5.50		6.18	6.14		4	
17/11/2015	11:40	Fine	Middle	-	27.00	27.00	27.10	8.27	8.27	8.28	32.11	32.11	32.11	84.2	86.0	85.7	5.60	5.71	5.69	6.47	6.45	6.47	2	2.00
	11:42		Middle	-	27.20	27.20		8.28	8.28		32.11	32.11		86.4	86.1		5.74	5.72		6.46	6.50		2	
19/11/2015	14:40	Fine	Middle	-	27.20	27.20	27.30	8.21	8.21	8.23	31.17	31.17	31.17	86.9	88.6	86.9	5.79	5.96	5.80	4.28	4.37	4.31	<2	<2
	14:42		Middle	-	27.40	27.40		8.24	8.24		31.16	31.16		87.3	84.9		5.81	5.65		4.30	4.27		<2	
21/11/2015	11:20	Fine	Middle	-	26.30	26.30	26.30	8.23	8.24	8.25	32.27	32.26	32.25	73.9	74.9	74.0	4.98	5.04	4.99	8.71	8.60	8.60	3	3.50
	11:22		Middle	-	26.30	26.30		8.27	8.27		32.23	32.23		74.4	72.7		5.04	4.89		8.53	8.54		4	
23/11/2015	16:30	Fine	Middle	-	26.50	26.50	26.50	8.30	8.30	8.30	32.28	32.28	32.28	86.7	86.7	87.0	5.78	5.78	5.81	6.16	6.13	6.13	6	5.50
	16:32		Middle	-	26.50	26.50		8.30	8.30		32.27	32.27		87.0	87.5		5.83	5.86		6.12	6.11		5	
25/11/2015	18:00	Fine	Middle	-	25.80	25.80	25.75	8.34	8.34	8.35	32.29	32.29	32.29	85.2	86.8	85.9	5.79	5.90	5.84	3.33	3.21	3.19	6	6.00
	18:02		Middle	-	25.70	25.70		8.35	8.35		32.29	32.29		86.6	84.9		5.89	5.77		3.11	3.09		6	
27/11/2015	17:13	Fine	Middle	-	22.10	22.10	22.00	8.41	8.41	8.41	32.50	32.50	32.52	80.9	81.0	81.2	5.89	5.90	5.91	4.86	4.74	4.75	4	3.50
	17:14		Middle	-	22.00	21.80		8.41	8.41		32.53	32.53		81.6	81.2		5.94	5.91		4.72	4.69		3	

Remarks:
Single underline denotes exceedance over Action Level.
Double underline denotes exceedance over Limit Level.



**Water Monitoring Result at C1 - HKCEC Extension
Mid-Flood Tide**

Date	Time	Weather Condition	Sampling Depth		Water Temperature			pH			Salinity		DO Saturation		DO		Turbidity		Suspended Solids					
					°C			-			ppt		%		mg/L		NTU		mg/L					
			m	Value	Average	Value	Average	Value	Average	Value	Average	Value	Average	Value	Average	Value	Average	Value	Average	Value	Average			
28/10/2015	16:35	Cloudy	Middle	2.5	27.10	27.10	27.15	8.41	8.41	8.41	31.28	31.28	31.28	79.2	78.6	79.5	5.29	5.25	5.31	4.44	4.71	4.51	2	2.00
	16:37		Middle	2.5	27.20	27.20		8.41	8.41		31.27	31.27		79.5	80.7		5.31	5.39		4.46	4.44		2	
30/10/2015	9:08	Fine	Middle	2.5	26.90	26.90	26.90	8.36	8.36	8.36	31.59	31.59	31.59	72.3	72.2	73.3	4.83	4.83	4.90	13.70	13.73	<u>13.68</u>	10	10.00
	9:10		Middle	2.5	26.90	26.90		8.36	8.36		31.59	31.59		74.4	74.3		4.96	4.96		13.61	13.68		10	
2/11/2015	11:05	Fine	Middle	3.0	26.20	26.20	26.15	8.38	8.38	8.38	32.07	32.07	32.08	84.3	85.7	85.1	5.69	5.79	5.75	9.79	9.85	<u>9.86</u>	9	8.00
	11:07		Middle	3.0	26.10	26.10		8.38	8.38		32.08	32.08		85.2	85.1		5.75	5.75		9.89	9.92		7	
4/11/2015	15:01	Fine	Middle	2.5	26.00	26.00	26.00	8.41	8.41	8.42	32.63	32.63	32.64	77.6	77.1	77.2	5.23	5.20	5.20	11.44	11.59	11.61	8	8.00
	15:03		Middle	2.5	26.00	26.00		8.42	8.42		32.64	32.64		77.0	76.9		5.19	5.18		11.71	11.68		8	
6/11/2015	15:41	Fine	Middle	2.5	26.00	26.00	26.00	8.38	8.38	8.39	32.55	32.55	32.56	75.4	74.4	73.6	5.12	5.02	4.97	10.23	10.23	<u>10.04</u>	6	6.50
	15:43		Middle	2.5	26.00	26.00		8.39	8.39		32.56	32.56		72.8	71.6		4.91	4.84		9.80	9.91		7	
9/11/2015	16:07	Fine	Middle	2.5	27.00	27.00	27.05	8.33	8.33	8.34	32.39	32.39	32.39	67.8	69.3	69.7	4.50	4.60	4.61	6.45	6.43	6.44	5	4.00
	16:09		Middle	2.5	27.10	27.10		8.34	8.34		32.39	32.39		70.9	70.7		4.71	4.64		6.43	6.43		3	
11/11/2015	16:24	Fine	Middle	2.5	25.70	25.70	25.70	8.40	8.40	8.40	32.68	32.68	32.69	67.2	66.4	65.9	4.55	4.60	4.49	8.78	8.74	8.76	6	6.00
	16:26		Middle	2.5	25.70	25.70		8.40	8.40		32.69	32.69		65.2	64.6		4.42	4.38		8.76	8.76		6	
13/11/2015	17:30	Cloudy	Middle	2.5	25.40	25.40	25.35	8.41	8.41	8.41	32.67	32.67	32.67	81.7	81.8	82.1	5.57	5.58	5.59	5.17	5.61	5.34	3	3.50
	17:32		Middle	2.5	25.30	25.30		8.41	8.41		32.67	32.67		81.7	83.1		5.55	5.67		5.36	5.22		4	
17/11/2015	11:00	Fine	Middle	3.0	26.20	26.20	26.20	8.33	8.33	8.33	32.39	32.39	32.40	84.4	83.3	83.2	5.68	5.61	5.60	13.28	13.30	<u>13.41</u>	11	10.00
	11:02		Middle	3.0	26.20	26.20		8.33	8.33		32.41	32.41		82.4	82.5		5.55	5.55		13.47	13.59		9	
19/11/2015	13:58	Fine	Middle	2.5	26.10	26.10	19.58	8.32	8.32	8.32	31.82	31.82	31.82	73.0	71.9	72.5	4.94	4.86	4.90	6.55	6.51	6.49	2	3.00
	14:00		Middle	2.5	0.00	26.10		8.32	8.32		31.82	31.82		71.7	73.3		4.85	4.96		6.45	6.44		4	
21/11/2015	15:08	Fine	Middle	2.5	25.50	25.50	25.50	8.34	8.34	8.35	32.50	32.50	32.50	72.1	71.4	71.4	4.91	4.87	4.86	7.03	6.89	6.84	6	6.50
	15:10		Middle	2.5	25.50	25.50		8.35	8.35		32.50	32.50		71.1	70.8		4.84	4.82		6.75	6.70		7	
23/11/2015	15:40	Fine	Middle	2.5	26.00	26.00	26.00	8.35	8.35	8.35	32.16	32.16	32.16	85.8	85.8	86.2	5.81	5.81	5.79	5.26	5.24	5.25	4	4.50
	15:42		Middle	2.5	26.00	26.00		8.35	8.35		32.16	32.16		86.8	86.5		5.87	5.65		5.24	5.27		5	
25/11/2015	15:51	Fine	Middle	2.5	25.40	25.40	25.40	8.38	8.38	8.38	32.06	32.06	32.07	74.0	74.9	75.7	5.07	5.12	5.18	4.20	4.19	4.17	3	3.50
	15:53		Middle	2.5	25.40	25.40		8.38	8.38		32.07	32.07		76.3	77.7		5.22	5.32		4.16	4.13		4	
27/11/2015	16:21	Fine	Middle	2.5	23.10	23.10	23.10	8.41	8.41	8.41	32.49	32.49	32.51	78.0	73.1	76.0	5.54	5.47	5.47	5.48	5.47	5.47	4	4.50
	16:22		Middle	2.5	23.10	23.10		8.41	8.41		32.53	32.53		76.8	75.9		5.47	5.38		5.46	5.47		5	

Remarks:
Single underline denotes exceedance over Action Level.
Double underline denotes exceedance over Limit Level.



**Water Monitoring Result at P1 - HKCEC Phase I
Mid-Flood Tide**

Date	Time	Weather Condition	Sampling Depth		Water Temperature			pH			Salinity			DO Saturation		DO		Turbidity		Suspended Solids				
					°C			-			ppt			%		mg/L		NTU		mg/L				
			m	Value	Average	Value	Average	Value	Average	Value	Average	Value	Average	Value	Average	Value	Average	Value	Average	Value	Average			
28/10/2015	16:19	Cloudy	Middle	2.5	28.40	28.40	28.55	8.39	8.39	8.39	31.37	31.31	31.37	73.1	72.3	72.4	4.75	4.71	4.71	4.87	5.04	4.86	3	3.00
	16:21		Middle	2.5	28.70	28.70		8.39	8.38		31.39	31.39		72.3	71.8		4.71	4.68		4.81	4.71		3	
30/10/2015	8:52	Fine	Middle	2.5	26.80	26.80	26.85	8.33	8.33	8.34	31.36	31.36	31.35	77.1	79.5	78.0	5.16	5.33	5.22	9.14	8.93	8.97	5	6.00
	8:54		Middle	2.5	26.90	26.90		8.35	8.35		31.33	31.33		78.6	76.6		5.27	5.13		8.83	8.99		7	
2/11/2015	10:45	Fine	Middle	3.0	26.10	26.10	26.05	8.32	8.32	8.34	32.02	32.02	32.02	90.5	91.6	90.7	6.12	6.19	6.13	8.71	8.80	8.80	7	6.50
	10:47		Middle	3.0	26.00	26.00		8.35	8.35		32.02	32.02		91.5	89.1		6.19	6.03		8.83	8.84		6	
4/11/2015	14:45	Fine	Middle	2.5	26.40	26.40	26.45	8.27	8.27	8.29	32.63	32.67	32.59	75.7	74.6	74.2	5.07	4.99	4.96	7.56	7.56	7.55	4	3.50
	14:47		Middle	2.5	26.50	26.50		8.31	8.31		32.53	32.53		73.4	73.2		4.89	4.88		7.54	7.52		3	
6/11/2015	15:25	Fine	Middle	2.5	26.30	26.30	26.25	8.32	8.32	8.33	32.54	32.54	32.55	77.3	75.7	75.8	5.20	5.09	5.10	8.52	8.39	8.41	5	5.50
	15:27		Middle	2.5	26.20	26.20		8.34	8.34		32.55	32.55		75.2	74.9		5.06	5.04		8.38	8.36		6	
9/11/2015	15:51	Fine	Middle	2.5	27.30	27.30	27.45	8.23	8.23	8.26	32.42	32.42	32.38	74.0	74.5	74.1	4.89	4.92	4.90	6.85	6.54	6.58	3	3.00
	15:53		Middle	2.5	27.60	27.60		8.29	8.29		32.34	32.34		75.6	72.4		4.99	4.78		6.46	6.45		3	
11/11/2015	16:08	Fine	Middle	2.5	25.50	25.50	25.50	8.37	8.37	8.38	32.71	32.71	32.71	80.3	76.8	76.9	5.46	5.22	5.23	8.02	8.01	7.98	4	4.00
	16:10		Middle	2.5	25.50	25.50		8.38	8.38		32.71	32.71		75.5	74.9		5.13	5.10		7.98	7.91		4	
13/11/2015	17:10	Cloudy	Middle	2.5	25.20	25.20	25.20	8.39	8.39	8.37	32.65	32.65	32.66	90.7	89.7	89.3	6.20	6.13	6.10	5.75	5.63	5.57	5	5.00
	17:12		Middle	2.5	25.20	25.20		8.30	8.40		32.66	32.66		88.9	87.8		6.08	6.00		5.48	5.43		5	
17/11/2015	10:40	Fine	Middle	3.0	26.80	26.80	26.90	8.28	8.28	8.29	32.25	32.25	32.25	86.9	87.5	87.6	5.79	5.83	5.84	8.21	8.26	8.24	6	6.50
	10:42		Middle	3.0	27.00	27.00		8.30	8.30		32.24	32.24		87.5	88.6		5.83	5.90		8.26	8.23		7	
19/11/2015	13:42	Fine	Middle	2.5	28.00	28.00	27.65	8.34	8.34	8.34	31.77	31.77	31.71	75.3	77.3	77.5	5.01	5.14	5.16	5.48	5.75	5.68	3	3.50
	13:44		Middle	2.5	27.30	27.30		8.33	8.33		31.65	31.65		79.0	78.3		5.26	5.21		5.75	5.75		4	
21/11/2015	14:52	Fine	Middle	2.5	25.60	25.60	25.65	8.27	8.27	8.29	32.37	32.37	32.36	73.8	72.2	71.2	5.02	4.91	4.84	6.28	6.28	6.28	4	5.00
	14:54		Middle	2.5	25.70	25.70		8.30	8.30		32.35	32.35		70.0	68.7		4.75	4.67		6.27	6.27		6	
23/11/2015	15:15	Fine	Middle	2.5	26.90	26.90	26.95	8.31	8.31	8.32	32.17	32.17	32.17	91.8	90.5	91.0	6.11	6.03	6.06	4.69	4.69	4.75	4	4.50
	15:17		Middle	2.5	27.00	27.00		8.32	8.32		32.17	32.17		91.5	90.0		6.09	5.99		4.79	4.83		5	
25/11/2015	15:35	Fine	Middle	2.5	25.20	25.20	25.25	8.33	8.33	8.34	32.11	32.11	32.09	81.7	81.2	81.5	5.60	5.57	5.59	5.58	5.66	5.68	5	5.00
	15:37		Middle	2.5	25.30	25.30		8.35	8.35		32.06	32.06		81.3	81.6		5.58	5.60		5.72	5.74		5	
27/11/2015	16:05	Fine	Middle	2.5	22.60	22.60	22.55	8.39	8.39	8.40	32.54	32.54	32.55	77.7	77.0	76.2	5.56	5.52	5.46	5.21	5.20	5.22	4	4.00
	16:07		Middle	2.5	22.50	22.50		8.41	8.41		32.55	32.55		75.6	74.3		5.42	5.33		5.21	5.25		4	

Remarks:
 Single underline denotes exceedance over Action Level.
 Double underline denotes exceedance over Limit Level.



**Water Monitoring Result at P3 - APA
Mid-Flood Tide**

Date	Time	Weather Condition	Sampling Depth		Water Temperature			pH			Salinity			DO Saturation			DO			Turbidity			Suspended Solids	
					°C			-			ppt			%			mg/L			NTU			mg/L	
					Value	Average		Value	Average		Value	Average		Value	Average		Value	Average		Value	Average		Value	Average
28/10/2015	16:23	Cloudy	Middle	2.5	27.10	27.10	27.20	8.39	8.39	8.39	31.35	31.35	31.34	76.3	78.3	78.5	5.08	5.21	5.21	3.76	3.72	3.70	<2	2.00
	16:25		Middle	2.5	27.30	27.30		8.38	8.38		31.32	31.32		79.2	80.0		5.27	5.29		3.69	3.63		2	
30/10/2015	8:56	Fine	Middle	2.5	26.80	26.80	26.80	8.34	8.34	8.34	31.34	31.34	31.34	70.1	68.6	68.2	4.70	4.60	4.57	8.92	8.72	8.80	7	6.00
	8:58		Middle	2.5	26.80	26.80		8.33	8.33		31.34	31.34		67.2	66.7		4.51	4.48		8.79	8.78		5	
2/11/2015	10:50	Fine	Middle	3.0	26.10	26.10	26.10	8.35	8.35	8.35	32.04	32.04	32.05	83.8	84.7	84.0	5.67	5.37	5.59	7.02	7.04	7.07	4	4.00
	10:52		Middle	3.0	26.10	26.10		8.35	8.35		32.05	32.05		84.0	83.5		5.68	5.65		7.10	7.12		4	
4/11/2015	14:49	Fine	Middle	2.5	26.10	26.10	26.10	8.34	8.34	8.35	32.55	32.55	32.57	74.8	74.1	73.7	5.04	5.00	4.97	7.78	7.60	7.70	9	9.50
	14:51		Middle	2.5	26.10	26.10		8.35	8.35		32.58	32.58		73.6	72.3		4.95	4.88		7.68	7.72		10	
6/11/2015	15:29	Fine	Middle	2.5	26.10	26.10	26.10	8.35	8.35	8.36	32.59	32.59	32.59	74.8	73.8	73.8	5.03	4.97	4.96	7.54	7.38	7.29	4	3.50
	15:31		Middle	2.5	26.10	26.10		8.36	8.36		32.59	32.59		73.6	72.8		4.93	4.90		7.16	7.09		3	
9/11/2015	15:55	Fine	Middle	2.5	27.10	27.10	27.10	8.31	8.31	8.32	32.35	32.35	32.35	74.0	73.5	73.1	4.91	4.88	4.85	6.29	6.42	6.39	2	2.00
	15:57		Middle	2.5	27.10	27.10		8.32	8.32		32.34	32.34		73.5	71.5		4.88	4.74		6.43	6.43		2	
11/11/2015	16:12	Fine	Middle	2.5	25.20	25.20	25.25	8.38	8.38	8.39	32.68	32.68	32.69	74.6	73.5	72.6	5.09	5.02	4.96	8.06	8.05	8.05	3	3.50
	16:14		Middle	2.5	25.30	25.30		8.39	8.39		32.69	32.69		71.8	70.4		4.91	4.81		8.04	8.04		4	
13/11/2015	17:15	Cloudy	Middle	2.5	25.20	25.20	25.20	8.40	8.40	8.40	32.52	32.52	32.58	84.8	85.1	84.9	5.80	5.82	5.80	4.25	4.21	4.22	3	4.00
	17:17		Middle	2.5	25.20	25.20		8.40	8.40		32.64	32.64		84.7	84.8		5.79	5.80		4.20	4.22		5	
17/11/2015	10:45	Fine	Middle	3.0	26.50	26.50	26.50	8.31	8.31	8.31	32.19	32.19	32.19	80.2	81.8	82.0	5.39	5.49	5.50	7.96	7.96	7.79	6	6.00
	10:47		Middle	3.0	26.50	26.50		8.31	8.31		32.19	32.19		82.9	82.9		5.56	5.56		7.65	7.60		6	
19/11/2015	13:46	Fine	Middle	2.5	26.50	26.50	26.55	8.32	8.32	8.32	31.65	31.65	31.64	70.8	69.2	69.6	4.76	4.65	4.68	5.76	5.94	5.72	4	3.50
	13:48		Middle	2.5	26.60	26.60		8.32	8.32		31.63	31.63		69.5	69.0		4.67	4.63		5.65	5.51		3	
21/11/2015	14:56	Fine	Middle	2.5	25.50	25.50	25.50	8.31	8.31	8.31	32.29	32.29	32.29	72.6	70.5	70.0	4.96	4.81	4.75	6.00	5.95	5.93	4	3.50
	14:58		Middle	2.5	25.50	25.50		8.31	8.31		32.29	32.29		68.8	67.9		4.70	4.54		5.91	5.85		3	
23/11/2015	15:20	Fine	Middle	2.5	26.40	26.40	26.40	8.33	8.33	8.34	32.15	32.15	32.15	91.5	91.8	91.7	6.15	6.17	6.16	4.46	4.50	4.44	5	4.50
	15:22		Middle	2.5	26.40	26.40		8.34	8.34		32.15	32.15		92.0	91.5		6.18	6.14		4.44	4.34		4	
25/11/2015	15:39	Fine	Middle	2.5	24.90	24.90	24.90	8.36	8.36	8.37	32.13	32.13	32.13	77.1	76.5	77.3	5.32	5.27	5.33	5.16	4.67	4.77	5	5.00
	15:41		Middle	2.5	24.90	24.90		8.37	8.37		32.12	32.12		77.9	77.7		5.37	5.36		4.64	4.61		5	
27/11/2015	16:09	Fine	Middle	2.5	22.70	22.70	22.70	8.41	8.41	8.41	32.54	32.54	32.55	75.3	74.6	74.1	5.38	5.33	5.30	5.52	5.49	5.49	4	4.00
	16:11		Middle	2.5	22.70	22.70		8.41	8.41		32.55	32.55		73.7	72.7		5.27	5.20		5.47	5.48		4	

Remarks:
Single underline denotes exceedance over Action Level.
Double underline denotes exceedance over Limit Level.



**Water Monitoring Result at P4 - SOC
Mid-Flood Tide**

Date	Time	Weather Condition	Sampling Depth		Water Temperature			pH			Salinity			DO Saturation			DO			Turbidity			Suspended Solids	
					°C			-			ppt			%			mg/L			NTU			mg/L	
					Value	Average		Value	Average		Value	Average		Value	Average		Value	Average		Value	Average		Value	Average
28/10/2015	16:27	Cloudy	Middle	2.5	27.10	27.10	27.15	8.39	8.39	8.40	31.29	31.29	31.29	79.5	80.2	78.9	5.30	5.31	5.25	4.43	4.50	4.44	2	2.00
	16:29		Middle	2.5	27.20	27.20		8.40	8.40		31.28	31.28		78.9	77.1		5.26	5.14		4.33	4.50		2	
30/10/2015	9:00	Fine	Middle	2.5	26.90	26.90	26.90	8.34	8.34	8.34	31.53	31.53	31.54	65.0	64.5	64.7	4.34	4.31	4.33	15.25	14.97	<u>15.00</u>	13	13.00
	9:02		Middle	2.5	26.90	26.90		8.34	8.34		31.54	31.54		64.6	64.8		4.32	4.33		14.89	14.87		13	
2/11/2015	10:55	Fine	Middle	3.0	26.10	26.10	26.20	8.36	8.36	8.36	32.06	32.06	32.06	88.4	88.3	88.0	5.98	5.97	5.95	8.58	8.57	8.57	7	6.50
	10:57		Middle	3.0	26.30	26.30		8.36	8.36		32.06	32.06		87.1	88.0		5.89	5.95		8.56	8.57		6	
4/11/2015	14:53	Fine	Middle	2.5	26.00	26.00	26.00	8.37	8.37	8.38	31.65	31.65	32.15	77.8	76.4	75.9	5.26	5.16	5.13	11.79	11.36	11.67	8	8.00
	14:55		Middle	2.5	26.00	26.00		8.39	8.39		32.64	32.64		75.3	74.0		5.09	5.00		11.77	11.75		8	
6/11/2015	15:33	Fine	Middle	2.5	26.10	26.10	26.10	8.36	8.36	8.37	32.50	32.50	32.53	73.1	71.7	71.1	4.93	4.83	4.79	10.08	10.31	<u>10.41</u>	4	5.00
	15:35		Middle	2.5	26.10	26.10		8.37	8.37		32.55	32.55		70.2	69.2		4.73	4.67		10.62	10.64		6	
9/11/2015	15:59	Fine	Middle	2.5	27.00	27.00	27.05	8.32	8.32	8.33	32.32	32.32	32.34	75.8	74.6	74.5	5.04	4.96	4.95	6.96	6.71	6.85	3	3.50
	16:01		Middle	2.5	27.10	27.10		8.33	8.33		32.35	32.35		74.1	73.6		4.92	4.89		6.81	6.91		4	
11/11/2015	16:16	Fine	Middle	2.5	25.50	25.50	25.55	8.39	8.39	8.39	32.61	32.61	32.64	75.3	75.9	74.9	5.12	5.16	5.09	6.49	6.53	6.52	5	4.00
	16:18		Middle	2.5	25.60	25.60		8.39	8.39		32.67	32.67		74.6	73.7		5.07	5.01		6.53	6.53		3	
13/11/2015	17:20	Cloudy	Middle	2.5	25.20	25.20	25.20	8.40	8.40	8.41	32.61	32.61	32.65	85.7	86.7	86.9	5.86	5.93	5.94	4.84	4.91	4.91	4	4.50
	17:22		Middle	2.5	25.20	25.20		8.41	8.41		32.68	32.69		87.3	87.9		5.97	5.99		4.95	4.93		5	
17/11/2015	10:50	Fine	Middle	3.0	26.30	26.30	26.30	8.31	8.31	8.32	32.35	32.35	32.35	80.4	81.4	81.5	5.41	5.47	5.48	11.91	11.95	<u>11.96</u>	12	12.00
	10:52		Middle	3.0	26.30	26.30		8.32	8.32		32.35	32.35		81.8	82.4		5.50	5.54		11.99	11.98		12	
19/11/2015	13:50	Fine	Middle	2.5	26.30	26.30	26.30	8.32	8.32	8.32	31.70	31.70	31.73	73.8	71.1	70.4	4.98	4.80	4.76	5.78	5.78	5.83	4	4.00
	13:52		Middle	2.5	26.30	26.30		8.32	8.32		31.76	31.76		69.3	67.5		4.68	4.56		5.83	5.93		4	
21/11/2015	15:00	Fine	Middle	2.5	25.20	25.20	25.20	8.32	8.32	8.33	32.39	32.39	32.39	75.6	81.6	77.2	5.18	5.59	5.29	6.49	6.45	6.45	4	4.50
	15:02		Middle	2.5	25.20	25.20		8.33	8.33		32.38	32.38		75.8	75.9		5.19	5.20		6.43	6.41		5	
23/11/2015	15:25	Fine	Middle	2.5	26.00	26.00	26.00	8.35	8.35	8.35	32.19	32.19	32.19	85.7	86.1	85.3	5.80	5.82	5.77	4.59	4.59	4.58	4	4.00
	15:27		Middle	2.5	26.00	26.00		8.35	8.35		32.19	32.19		85.3	84.1		5.77	5.68		4.57	4.56		4	
25/11/2015	15:43	Fine	Middle	2.5	25.10	25.10	25.10	8.37	8.37	8.37	32.08	32.08	32.09	76.9	76.4	76.2	5.29	5.25	5.23	4.09	4.09	4.05	4	4.00
	15:45		Middle	2.5	25.10	25.10		8.37	8.37		32.09	32.09		76.5	74.8		5.25	5.11		4.04	3.99		4	
27/11/2015	16:13	Fine	Middle	2.5	23.00	23.00	22.95	8.41	8.41	8.41	32.53	32.53	32.54	80.3	79.4	79.0	5.72	5.65	5.62	6.30	6.27	6.26	3	3.00
	16:15		Middle	2.5	22.90	22.90		8.41	8.41		32.54	32.54		78.7	77.5		5.60	5.52		6.22	6.24		3	

Remarks:
Single underline denotes exceedance over Action Level.
Double underline denotes exceedance over Limit Level.



**Water Monitoring Result at P5 - WCT / RT / IT
Mid-Flood Tide**

Date	Time	Weather Condition	Sampling Depth		Water Temperature			pH			Salinity			DO Saturation			DO		Turbidity			Suspended Solids		
					°C			-			ppt			%			mg/L		NTU			mg/L		
					Value	Average		Value	Average		Value	Average		Value	Average		Value	Average		Value	Average	Value	Average	Value
28/10/2015	16:31	Cloudy	Middle	2.5	27.10	27.10	27.15	8.41	8.41	8.41	29.55	29.55	29.80	77.8	76.2	76.6	5.24	5.17	5.17	4.68	5.03	4.91	3	2.50
	16:33		Middle	2.5	27.20	27.20		8.41	8.41		30.04	30.04		76.3	76.0		5.14	5.14		5.04	4.90		2	
30/10/2015	9:04	Fine	Middle	2.5	26.90	26.90	26.90	8.35	8.37	8.36	31.58	31.58	31.59	77.1	76.4	75.4	5.16	5.11	5.04	12.21	12.07	<u>12.07</u>	12	13.00
	9:06		Middle	2.5	26.90	26.90		8.36	8.36		31.60	31.60		74.5	73.4		4.98	4.91		12.01	12.00		14	
2/11/2015	11:00	Fine	Middle	3.0	26.20	26.20	26.15	8.37	8.37	8.38	32.10	32.10	32.10	85.5	87.8	87.0	5.77	5.93	5.87	11.40	11.43	<u>11.41</u>	9	9.00
	11:02		Middle	3.0	26.10	26.10		8.38	8.38		32.10	32.10		87.5	87.0		5.91	5.87		11.43	11.39		9	
4/11/2015	14:57	Fine	Middle	2.5	25.90	25.90	25.90	8.40	8.40	8.41	31.63	31.63	31.63	78.3	76.7	76.2	5.29	5.18	5.15	11.15	10.78	10.79	5	5.50
	14:59		Middle	2.5	25.90	25.90		8.41	8.41		31.63	31.63		75.5	74.2		5.10	5.01		10.68	10.55		6	
6/11/2015	15:37	Fine	Middle	2.5	26.00	26.00	26.00	8.38	8.38	8.38	32.53	32.53	32.54	70.6	68.6	67.7	4.77	4.64	4.58	14.80	14.83	<u>14.74</u>	8	8.50
	15:39		Middle	2.5	26.00	26.00		8.38	8.38		32.55	32.55		66.7	65.0		4.50	4.39		14.49	14.83		9	
9/11/2015	16:03	Fine	Middle	2.5	27.00	27.00	27.05	8.33	8.33	8.33	32.40	32.40	32.40	71.4	72.3	72.4	4.74	4.80	4.79	7.43	7.44	7.44	4	4.00
	16:05		Middle	2.5	27.10	27.10		8.33	8.33		32.39	32.39		73.2	72.5		4.79	4.81		7.44	7.43		4	
11/11/2015	16:20	Fine	Middle	2.5	25.60	25.60	25.60	8.39	8.39	8.39	32.68	32.68	32.70	71.6	71.3	72.3	4.86	4.84	4.91	9.13	9.07	9.09	7	6.50
	16:22		Middle	2.5	25.60	25.60		8.39	8.39		32.71	32.71		71.7	74.6		4.87	5.06		9.07	9.09		6	
13/11/2015	17:25	Cloudy	Middle	2.5	25.40	25.40	25.40	8.41	8.41	8.41	32.61	32.61	32.61	83.1	82.4	83.5	5.66	5.61	5.69	5.89	5.94	5.81	8	7.00
	17:27		Middle	2.5	25.40	25.40		8.41	8.41		32.60	32.60		83.8	84.7		5.70	5.77		5.75	5.66		6	
17/11/2015	10:55	Fine	Middle	3.0	26.20	26.20	26.25	8.32	8.32	8.33	32.40	32.40	32.41	82.2	82.6	81.4	5.53	5.56	5.48	11.01	11.00	<u>11.00</u>	11	10.50
	10:57		Middle	3.0	26.30	26.30		8.33	8.33		32.41	32.41		81.4	79.2		5.48	5.33		11.00	11.00		10	
19/11/2015	13:54	Fine	Middle	2.5	26.10	26.10	26.15	8.32	8.32	8.32	31.85	31.85	31.85	71.9	70.3	69.0	4.86	4.75	4.65	8.71	8.32	8.31	5	4.50
	13:56		Middle	2.5	26.20	26.20		8.32	8.32		31.85	31.85		67.1	66.5		4.54	4.43		8.10	8.10		4	
21/11/2015	15:04	Fine	Middle	2.5	25.30	25.30	25.35	8.33	8.33	8.34	32.38	32.38	32.42	62.7	63.6	63.0	4.28	4.35	4.31	5.32	5.42	5.42	5	4.50
	15:06		Middle	2.5	25.40	25.40		8.34	8.34		32.45	32.45		63.1	62.5		4.33	4.26		5.45	5.47		4	
23/11/2015	15:30	Fine	Middle	2.5	26.10	26.10	26.10	8.35	8.35	8.35	32.04	32.04	32.07	86.3	87.3	86.6	5.83	5.90	5.86	5.58	5.45	5.42	4	4.50
	15:37		Middle	2.5	26.10	26.10		8.35	8.35		32.10	32.10		86.6	86.3		5.86	5.83		5.33	5.30		5	
25/11/2015	15:47	Fine	Middle	2.5	25.20	25.20	25.25	8.37	8.37	8.36	31.99	31.99	32.03	75.7	73.7	73.6	5.19	5.05	5.05	4.71	4.91	4.92	5	4.00
	15:49		Middle	2.5	25.30	25.30		8.35	8.35		32.09	32.04		72.8	72.3		4.99	4.96		4.88	5.19		3	
27/11/2015	16:17	Fine	Middle	2.5	23.00	23.00	23.00	8.41	8.41	8.41	32.43	32.43	32.47	80.7	80.4	81.1	5.74	5.72	5.77	6.14	6.23	6.20	4	3.00
	16:19		Middle	2.5	23.00	23.00		8.41	8.41		32.51	32.51		81.5	81.9		5.79	5.82		6.25	6.17		2	

Remarks:
Single underline denotes exceedance over Action Level.
Double underline denotes exceedance over Limit Level.



**Water Monitoring Result at RW21-P789 - Sun Hung Kai Centre
Mid-Flood Tide**

Date	Time	Weather Condition	Sampling Depth		Water Temperature			pH			Salinity			DO Saturation			DO			Turbidity			Suspended Solids	
					°C			-			ppt			%			mg/L			NTU			mg/L	
					Value	Average		Value	Average		Value	Average		Value	Average		Value	Average		Value	Average		Value	Average
28/10/2015	20:11	Cloudy	Middle	3.0	26.40	26.40	26.40	8.32	8.32	8.34	32.21	32.21	32.21	79.0	79.7	79.3	5.30	5.35	5.32	7.66	7.58	7.59	7	7.50
	20:12		Middle	3.0	26.40	26.40		8.35	8.35		32.20	32.20		79.2	79.1		5.32	5.31		7.54	7.59		8	
30/10/2015	9:30	Fine	Middle	3.5	27.00	27.00	27.05	8.31	8.31	8.32	31.59	31.59	31.58	88.1	87.3	87.6	5.88	5.82	5.84	13.61	13.61	<u>13.58</u>	10	9.00
	9:32		Middle	3.5	27.10	27.10		8.33	8.33		31.57	31.57		86.4	88.7		5.76	5.91		13.61	13.49		8	
2/11/2015	11:45	Fine	Middle	3.5	26.20	26.20	26.20	8.33	8.33	8.34	32.19	32.19	32.19	84.8	85.5	84.9	5.72	5.76	5.73	12.06	12.06	<u>12.12</u>	8	7.50
	11:47		Middle	3.5	26.20	26.20		8.35	8.35		32.19	32.19		85.1	84.2		5.74	5.68		12.15	12.19		7	
4/11/2015	15:22	Fine	Middle	3.5	26.10	26.10	26.10	8.33	8.33	8.36	32.66	32.66	32.66	80.7	78.9	77.4	5.44	5.32	5.22	10.53	10.62	<u>10.62</u>	9	8.00
	15:24		Middle	3.5	26.10	26.10		8.38	8.38		32.65	32.65		75.5	74.4		5.09	5.01		10.65	10.66		7	
6/11/2015	16:00	Fine	Middle	3.5	26.00	26.00	26.00	8.38	8.38	8.38	32.54	32.54	32.58	68.9	67.8	67.1	4.65	4.56	4.53	11.49	11.49	<u>11.49</u>	8	7.50
	16:02		Middle	3.5	26.00	26.00		8.38	8.38		32.62	32.62		66.4	65.4		4.48	4.41		11.49	11.49		7	
9/11/2015	16:29	Fine	Middle	3.5	26.90	26.90	26.95	8.26	8.26	8.28	32.45	32.45	32.44	77.1	76.5	75.1	5.13	5.19	5.02	8.54	8.52	<u>8.57</u>	6	6.00
	16:30		Middle	3.5	27.00	27.00		8.30	8.30		32.42	32.42		74.7	72.1		4.98	4.79		8.57	8.66		6	
11/11/2015	16:40	Fine	Middle	3.5	25.50	25.50	25.50	8.36	8.36	8.37	32.61	32.61	32.63	79.6	79.2	79.2	5.41	5.39	5.39	7.78	7.89	7.72	4	4.00
	16:42		Middle	3.5	25.50	25.50		8.37	8.37		32.65	32.65		79.0	78.8		5.38	5.38		7.61	7.61		4	
13/11/2015	18:53	Cloudy	Middle	3.5	25.00	25.00	25.00	8.30	8.30	8.30	32.74	32.74	32.74	78.0	78.5	78.0	5.35	5.39	5.35	8.02	7.97	7.98	9	9.00
	18:54		Middle	3.5	25.00	25.00		8.30	8.30		32.74	32.74		77.6	77.9		5.32	5.34		8.00	7.93		9	
17/11/2015	11:27	Fine	Middle	3.5	26.60	26.60	26.70	8.28	8.28	8.29	32.42	32.42	32.42	84.0	83.7	82.3	5.61	5.59	5.49	10.07	10.07	<u>10.06</u>	8	8.00
	11:29		Middle	3.5	26.80	26.80		8.30	8.30		32.41	32.41		81.6	79.7		5.45	5.31		10.05	10.03		8	
19/11/2015	14:18	Fine	Middle	3.5	26.30	26.30	26.30	8.27	8.26	8.28	31.92	31.92	31.93	71.6	71.7	71.5	4.82	4.83	4.69	9.81	9.79	<u>9.79</u>	8	8.00
	14:20		Middle	3.5	26.30	26.30		8.29	8.29		31.94	31.94		70.2	72.4		4.73	4.38		9.79	9.78		8	
21/11/2015	11:54	Fine	Middle	3.5	25.70	25.70	25.70	8.25	8.25	8.27	32.31	32.31	32.29	79.1	79.4	79.0	5.38	5.39	5.37	7.94	8.04	7.98	6	5.50
	11:56		Middle	3.5	25.70	25.70		8.29	8.29		32.27	32.27		78.7	78.6		5.35	5.34		7.98	7.95		5	
23/11/2015	15:50	Fine	Middle	3.5	26.00	26.00	26.00	8.33	8.33	8.34	32.37	32.37	32.33	88.1	88.9	88.0	5.96	6.01	5.95	6.42	6.42	6.42	5	6.00
	15:52		Middle	3.5	26.00	26.00		8.34	8.34		32.28	32.28		87.0	88.1		5.88	5.96		6.42	6.41		7	
25/11/2015	16:10	Fine	Middle	3.5	25.20	25.20	25.20	8.35	8.35	8.36	32.11	32.11	32.10	75.6	75.9	75.8	5.19	5.21	5.20	5.30	5.30	5.27	4	4.00
	16:12		Middle	3.5	25.20	25.20		8.36	8.36		32.09	32.09		75.9	75.6		5.21	5.19		5.26	5.23		4	
27/11/2015	17:55	Fine	Middle	3.0	22.00	22.00	21.95	8.37	8.37	8.39	32.63	32.63	32.66	82.1	82.4	81.9	5.97	5.99	5.96	7.91	7.93	7.66	4	3.50
	17:56		Middle	3.0	21.80	22.00		8.39	8.41		32.69	32.69		81.4	81.6		5.92	5.94		7.45	7.33		3	

Remarks:
Single underline denotes exceedance over Action Level.
Double underline denotes exceedance over Limit Level.



**Water Monitoring Result at WSD19 - Sheung Wan
Mid-Flood Tide**

Date	Time	Weather Condition	Sampling Depth		Water Temperature			pH			Salinity			DO Saturation			DO		Turbidity			Suspended Solids		
					°C			-			ppt			%			mg/L		NTU			mg/L		
					Value	Value	Average	Value	Value	Average	Value	Value	Average	Value	Value	Average	Value	Value	Average	Value	Value	Average	Value	Value
28/10/2015	19:05	Cloudy	Middle	3.0	26.70	26.70	26.75	8.24	8.24	8.25	31.80	31.80	31.80	81.7	82.9	82.1	5.47	5.55	5.50	7.97	7.78	7.81	8	8.50
	19:06		Middle	3.0	26.80	26.80		8.26	8.26		31.79	31.79		82.4	81.4		5.52	5.46		7.65	7.82		9	
30/10/2015	8:04	Fine	Middle	3.5	26.70	26.70	26.70	8.73	8.73	8.67	31.87	31.87	31.77	74.0	72.9	72.8	4.95	4.88	4.87	10.05	10.16	<u>10.14</u>	7	7.50
	8:06		Middle	3.5	26.70	26.70		8.61	8.61		31.67	31.67		72.3	71.8		4.85	4.81		10.20	10.15		8	
2/11/2015	10:03	Fine	Middle	3.5	25.40	25.40	25.35	8.29	8.29	8.32	32.02	32.02	32.03	83.0	83.0	82.0	5.68	5.68	5.62	9.49	9.51	<u>9.51</u>	8	8.00
	10:05		Middle	3.5	25.30	25.30		8.34	8.34		32.03	32.03		81.8	80.3		5.61	5.50		9.52	9.53		8	
4/11/2015	13:46	Fine	Middle	3.5	26.80	26.80	26.90	8.33	8.33	8.35	32.77	32.77	32.70	77.3	72.6	75.0	5.27	5.15	5.09	12.65	12.47	<u>12.50</u>	10	10.00
	13:48		Middle	3.5	27.00	27.00		8.36	8.36		32.63	32.63		76.2	73.7		5.06	4.89		12.38	12.48		10	
6/11/2015	14:17	Fine	Middle	3.5	26.10	26.10	26.10	8.39	8.39	8.39	32.58	32.58	32.59	70.8	71.5	69.0	4.77	4.82	4.65	11.03	11.02	<u>11.05</u>	8	8.00
	14:19		Middle	3.5	26.10	26.10		8.38	8.38		32.59	32.59		67.1	66.4		4.52	4.47		11.01	11.13		8	
9/11/2015	15:09	Fine	Middle	3.5	27.60	27.60	27.70	8.28	8.28	8.29	32.35	32.35	32.31	75.3	73.9	73.0	4.94	4.85	4.78	9.39	9.50	<u>9.41</u>	9	8.50
	15:11		Middle	3.5	27.80	27.80		8.30	8.30		32.27	32.27		72.0	70.6		4.71	4.63		9.41	9.34		8	
11/11/2015	15:20	Fine	Middle	3.5	26.10	26.10	26.05	8.40	8.40	8.40	32.72	32.72	32.73	86.9	87.8	87.1	5.85	5.92	5.87	13.88	13.89	<u>13.69</u>	12	11.50
	15:22		Middle	3.5	26.00	26.00		8.39	8.39		32.73	32.73		87.7	86.1		5.91	5.80		13.43	13.54		11	
13/11/2015	20:08	Cloudy	Middle	3.5	24.60	24.60	24.60	8.36	8.36	8.37	32.82	32.82	32.82	80.4	81.7	81.3	5.55	5.64	5.61	10.62	10.58	<u>10.56</u>	10	10.50
	20:09		Middle	3.5	24.60	24.60		8.37	8.37		32.82	32.82		81.8	81.2		5.65	5.61		10.54	10.50		11	
17/11/2015	9:50	Fine	Middle	3.5	26.10	26.10	26.10	8.33	8.33	8.33	32.42	32.42	32.42	78.5	80.9	80.8	5.30	5.45	5.45	12.24	12.11	<u>12.12</u>	16	<u>16.00</u>
	9:52		Middle	3.5	26.10	26.10		8.32	8.32		32.42	32.42		81.8	82.1		5.52	5.54		12.04	12.09		16	
19/11/2015	10:32	Fine	Middle	3.5	26.40	26.40	26.40	8.29	8.29	8.30	31.72	31.72	31.72	75.0	74.3	74.5	5.05	5.00	5.01	8.25	8.22	<u>8.20</u>	8	8.00
	10:34		Middle	3.5	26.40	26.40		8.30	8.30		31.72	31.72		74.1	74.5		4.98	5.02		8.16	8.15		8	
21/11/2015	14:14	Fine	Middle	3.5	26.10	26.10	26.05	8.31	8.31	8.32	32.27	32.27	32.30	66.9	71.2	70.8	4.52	4.81	4.78	6.47	6.46	6.45	5	5.00
	14:16		Middle	3.5	26.00	26.00		8.32	8.32		32.33	32.33		72.5	72.4		4.90	4.90		6.44	6.43		5	
23/11/2015	14:30	Fine	Middle	3.5	26.70	26.70	26.75	8.43	8.43	8.40	32.16	32.16	32.16	91.2	91.1	90.4	6.06	6.05	6.00	10.55	10.62	<u>10.59</u>	8	8.00
	14:32		Middle	3.5	26.80	26.80		8.36	8.36		32.15	32.15		88.8	90.6		5.90	6.00		10.82	10.35		8	
25/11/2015	14:57	Fine	Middle	3.5	26.00	26.00	26.00	8.34	8.34	8.35	31.70	31.70	31.69	72.8	72.6	72.9	4.94	4.93	4.95	11.46	11.17	<u>11.17</u>	12	12.50
	14:59		Middle	3.5	26.00	26.00		8.35	8.35		31.67	31.67		73.0	73.2		4.96	4.97		11.03	11.02		13	
27/11/2015	18:38	Fine	Middle	3.0	21.70	21.70	21.65	8.06	8.06	8.07	32.61	32.61	32.61	82.4	82.8	81.5	6.05	6.09	5.97	8.01	7.98	7.99	9	9.50
	18:39		Middle	3.0	21.60	21.60		8.07	8.07		32.60	32.60		80.0	80.8		5.85	5.89		8.02	7.95		10	

Remarks:
Single underline denotes exceedance over Action Level.
Double underline denotes exceedance over Limit Level.



**Water Monitoring Result at C7 - Windsor House
Mid-Ebb Tide**

Date	Time	Weather Condition	Sampling Depth		Water Temperature		pH			Salinity		DO Saturation		DO		Turbidity		Suspended Solids						
					°C		-		ppt		%		mg/L		NTU		mg/L							
					Value	Average	Value	Average	Value	Average	Value	Average	Value	Average	Value	Average	Value	Average						
28/10/2015	13:06	Fine	Middle	-	27.90	27.90	27.95	8.09	8.09	8.11	31.64	31.64	31.66	86.8	85.9	85.0	5.70	5.64	5.58	5.83	5.85	5.85	6	5.50
	13:08		Middle	-	28.00	28.00		8.13	8.13		31.67	31.67		83.9	83.5		5.50	5.48		5.86	5.86		5	
30/10/2015	15:27	Fine	Middle	-	28.00	28.00	28.00	8.14	8.14	8.18	30.95	30.95	30.99	71.7	72.6	72.1	4.72	4.79	4.75	5.33	5.33	5.33	3	3.00
	15:29		Middle	-	28.00	28.00		8.22	8.22		31.02	31.02		71.1	73.0		4.68	4.80		5.33	5.33		3	
2/11/2015	3:45	Cloudy	Middle	-	23.30	23.30	23.25	8.35	8.35	8.42	32.42	32.42	32.42	76.5	76.4	76.0	5.44	5.42	5.40	3.65	3.79	3.72	4	4.00
	3:46		Middle	-	23.20	23.20		8.36	8.60		32.41	32.41		75.5	75.6		5.36	5.37		3.71	3.73		4	
4/11/2015	4:15	Cloudy	Middle	-	25.00	25.00	24.95	8.39	8.39	8.40	32.78	32.78	32.78	77.7	78.3	77.9	5.34	5.39	5.36	4.33	4.35	4.28	6	5.50
	4:16		Middle	-	24.90	24.90		8.40	8.40		32.78	32.78		77.6	77.9		5.34	5.37		4.29	4.16		5	
6/11/2015	9:50	Fine	Middle	-	26.20	26.20	26.15	8.34	8.34	8.34	32.35	32.35	32.36	79.1	79.5	79.3	5.33	5.36	5.34	3.50	3.45	3.43	2	2.50
	9:52		Middle	-	26.10	26.10		8.33	8.33		32.37	32.37		79.8	78.6		5.38	5.30		3.40	3.36		3	
9/11/2015	-	Fine	Middle	-	-	-		-	-		-	-		-	-		-	-		-	-		-	
	-		Middle	-	-	-		-	-		-	-		-	-		-	-		-	-		-	
11/11/2015	12:35	Cloudy	Middle	-	26.40	26.40	26.25	8.33	8.33	8.34	32.49	32.79	32.57	88.7	89.0	88.2	5.95	5.97	5.91	12.31	12.53	<u>12.33</u>	9	9.50
	12:37		Middle	-	26.10	26.10		8.35	8.35		32.49	32.49		87.7	87.5		5.87	5.86		12.30	12.18		10	
13/11/2015	14:40	Cloudy	Middle	-	26.10	26.10	26.10	8.36	8.36	8.36	32.42	32.42	32.43	89.1	89.3	88.2	6.01	6.02	5.94	2.64	2.64	2.64	<2	<2
	14:42		Middle	-	26.10	26.10		8.36	8.36		32.43	32.43		88.7	85.8		5.98	5.75		2.63	2.65		<2	
17/11/2015	1:50	Cloudy	Middle	-	25.70	25.70	25.70	8.13	8.13	8.15	32.70	32.70	32.70	81.8	82.1	81.7	5.54	5.56	5.53	4.86	4.70	4.73	2	2.50
	1:51		Middle	-	25.70	25.70		8.16	8.16		32.70	32.71		81.5	81.3		5.52	5.50		4.68	4.66		3	
19/11/2015	4:26	Cloudy	Middle	-	25.70	25.70	25.70	8.29	8.29	8.29	31.79	31.79	31.79	74.5	74.8	74.7	5.08	5.10	5.10	6.09	6.05	6.01	7	6.00
	4:27		Middle	-	25.70	25.70		8.29	8.29		31.79	31.79		75.2	74.3		5.12	5.10		5.95	5.93		5	
21/11/2015	19:18	Cloudy	Middle	-	25.40	25.40	25.35	8.38	8.38	8.38	32.40	32.40	32.40	79.8	80.3	80.3	5.46	5.50	5.50	2.86	2.83	2.68	3	3.00
	19:19		Middle	-	25.30	25.30		8.37	8.37		32.40	32.40		80.4	80.6		5.51	5.52		2.66	2.38		3	
23/11/2015	11:30	Fine	Middle	-	26.70	26.70	26.75	8.28	8.28	8.29	32.35	32.35	32.35	84.9	87.2	86.2	5.66	5.82	5.75	4.25	4.27	4.25	4	3.00
	11:32		Middle	-	26.80	26.80		8.30	8.30		32.34	32.34		87.6	85.2		5.84	5.69		4.25	4.21		2	
25/11/2015	11:55	Fine	Middle	-	26.00	26.00	26.05	8.30	8.30	8.31	32.32	32.32	32.33	73.4	72.7	72.1	4.95	4.91	4.87	3.89	4.19	4.10	4	4.00
	11:57		Middle	-	26.10	26.10		8.32	8.32		32.33	32.33		71.6	70.8		4.82	4.78		4.20	4.10		4	
27/11/2015	12:00	Fine	Middle	-	24.20	24.20	24.20	8.21	8.21	8.24	32.44	32.44	32.44	75.2	75.2	74.6	5.24	5.23	5.22	11.00	11.00	<u>11.19</u>	6	6.50
	12:02		Middle	-	24.20	24.20		8.26	8.26		32.44	32.44		74.6	73.5		5.20	5.22		11.00	11.77		7	

Remarks:
Single underline denotes exceedance over Action Level.
Double underline denotes exceedance over Limit Level.



**Water Monitoring Result at C1 - HKCEC
Mid-Ebb Tide**

Date	Time	Weather Condition	Sampling Depth		Water Temperature		pH			Salinity		DO Saturation		DO		Turbidity		Suspended Solids						
					°C		-		ppt		%		mg/L		NTU		mg/L							
			m	Value	Average	Value	Average	Value	Average	Value	Average	Value	Average	Value	Average	Value	Average	Value	Average					
28/10/2015	11:45	Fine	Middle	2.5	27.40	27.40	27.40	8.37	8.37	8.37	31.98	31.98	31.98	86.8	88.2	87.1	5.71	5.84	5.76	6.71	6.46	6.49	4	5.00
	11:47		Middle	2.5	27.40	27.40		8.37	8.37		31.98	31.98		87.3	86.1		5.78	5.69		6.43	6.36		6	
30/10/2015	14:46	Fine	Middle	2.5	27.50	27.50	27.50	8.37	8.37	8.37	31.38	31.38	31.38	74.5	73.8	74.1	4.96	4.89	4.92	6.15	5.94	5.69	4	3.50
	14:48		Middle	2.5	27.50	27.50		8.37	8.37		31.38	31.38		73.8	74.1		4.89	4.92		5.33	5.33		3	
2/11/2015	6:13	Cloudy	Middle	2.0	23.30	23.30	23.25	8.43	8.43	8.43	32.14	32.14	32.14	72.9	74.0	73.5	5.18	5.26	5.22	5.47	5.45	5.40	6	6.00
	6:14		Middle	2.0	23.20	23.20		8.43	8.43		32.14	32.14		73.5	73.4		5.22	5.22		5.36	5.32		6	
4/11/2015	6:28	Cloudy	Middle	2.5	24.40	24.40	24.35	8.38	8.38	8.38	32.52	32.52	32.52	82.2	83.1	82.5	5.72	5.79	5.74	4.54	4.30	4.25	6	5.00
	6:29		Middle	2.5	24.30	24.30		8.38	8.39		32.52	32.52		82.6	82.1		5.73	5.72		4.10	4.07		4	
6/11/2015	9:09	Fine	Middle	2.5	25.90	25.90	25.90	8.39	8.39	8.39	32.53	32.53	32.55	70.8	68.7	68.4	4.79	4.65	4.63	8.35	8.31	8.30	5	5.00
	9:11		Middle	2.5	25.90	25.90		8.39	8.39		32.57	32.57		67.5	66.5		4.57	4.50		8.28	8.27		5	
9/11/2015	10:57	Fine	Middle	2.5	27.00	27.00	27.05	8.33	8.33	8.33	32.47	32.47	32.48	73.0	72.5	72.7	4.84	4.81	4.82	8.55	8.55	8.57	6	5.50
	10:58		Middle	2.5	27.10	27.10		8.33	8.33		32.49	32.49		72.4	72.8		4.81	4.83		8.55	8.62		5	
11/11/2015	11:20	Cloudy	Middle	2.5	25.60	25.60	25.60	8.41	8.41	8.41	32.88	32.88	32.87	82.9	83.7	83.2	5.62	5.68	5.65	8.42	8.39	8.37	5	4.50
	11:22		Middle	2.5	25.60	25.60		8.41	8.41		32.85	32.88		83.3	82.8		5.66	5.62		8.35	8.31		4	
13/11/2015	13:58	Cloudy	Middle	2.5	25.80	25.80	25.85	8.42	8.42	8.42	32.47	32.47	32.60	75.1	74.0	73.8	5.07	5.00	4.99	7.18	7.16	7.20	5	5.50
	14:00		Middle	2.5	25.90	25.90		8.41	8.41		32.73	32.73		74.0	72.1		5.00	4.87		7.22	7.25		6	
17/11/2015	3:40	Cloudy	Middle	2.5	25.60	25.60	25.60	8.24	8.24	8.25	31.80	31.80	31.80	73.6	74.9	74.6	5.02	5.10	5.09	4.63	4.79	4.71	4	4.00
	3:41		Middle	2.5	25.60	25.60		8.26	8.26		31.80	31.80		74.7	75.1		5.09	5.13		4.73	4.70		4	
19/11/2015	5:37	Cloudy	Middle	2.0	25.60	25.60	25.60	8.02	8.02	8.05	30.84	30.84	30.86	73.5	74.6	74.3	5.05	5.12	5.10	3.58	3.36	3.44	2	2.00
	5:38		Middle	2.0	25.60	25.60		8.08	8.08		30.88	30.88		74.2	74.7		5.10	5.12		3.47	3.33		2	
21/11/2015	21:35	Cloudy	Middle	2.5	24.90	24.90	24.80	8.43	8.43	8.43	32.76	32.76	32.76	72.2	75.8	74.8	4.97	5.22	5.15	5.31	5.04	5.14	4	4.00
	21:36		Middle	2.5	24.70	24.70		8.43	8.43		32.76	32.76		76.1	75.0		5.25	5.17		5.11	5.08		4	
23/11/2015	11:05	Fine	Middle	3.5	25.70	25.70	25.70	8.35	8.35	8.35	32.34	32.34	32.34	82.9	83.9	83.8	5.63	5.70	5.69	8.12	8.11	7.91	6	6.50
	11:10		Middle	3.5	25.70	25.70		8.35	8.35		32.34	32.34		84.7	83.7		5.75	5.69		7.70	7.69		7	
25/11/2015	11:09	Fine	Middle	2.5	25.30	25.30	25.30	8.41	8.41	8.41	32.69	32.69	32.69	69.7	69.3	69.7	4.76	4.74	4.76	5.81	5.80	5.86	6	5.50
	11:11		Middle	2.5	25.30	25.30		8.40	8.40		32.69	32.69		69.5	70.1		4.75	4.79		5.81	6.02		5	
27/11/2015	14:28	Fine	Middle	2.5	23.30	23.30	23.30	8.40	8.40	8.41	32.63	32.64	32.64	75.9	74.4	74.3	5.37	5.26	5.25	5.94	5.90	5.88	7	7.00
	14:30		Middle	2.5	23.30	23.30		8.41	8.41		32.65	32.65		73.7	73.3		5.20	5.18		5.86	5.81		7	

Remarks:
Single underline denotes exceedance over Action Level.
Double underline denotes exceedance over Limit Level.



**Water Monitoring Result at P1 - HKCEC Phase I
Mid-Ebb Tide**

Date	Time	Weather Condition	Sampling Depth		Water Temperature		pH			Salinity		DO Saturation		DO		Turbidity		Suspended Solids						
					°C		-		ppt		%		mg/L		NTU		mg/L							
			m	Value	Average	Value	Average	Value	Average	Value	Average	Value	Average	Value	Average	Value	Average	Value	Average					
28/10/2015	11:25	Fine	Middle	2.5	27.90	27.90	27.95	8.29	8.29	8.31	32.12	32.12	32.12	90.5	89.4	90.4	5.93	5.89	5.93	8.82	8.78	8.76	6	6.00
	11:27		Middle	2.5	28.00	28.00		8.33	8.33		32.11	32.11		91.3	90.5		5.97	5.93		8.74	8.71		6	
30/10/2015	14:30	Fine	Middle	2.5	27.50	27.50	27.40	8.25	8.25	8.30	31.23	31.23	31.34	82.2	78.5	80.1	5.47	5.22	5.33	6.93	6.56	6.73	3	3.00
	14:32		Middle	2.5	27.30	27.30		8.34	8.34		31.44	31.44		79.9	79.8		5.31	5.30		6.66	6.75		3	
2/11/2015	5:48	Cloudy	Middle	2.0	22.90	22.90	22.90	8.40	8.40	8.41	31.98	31.98	31.98	72.4	72.6	73.1	5.19	5.21	5.24	5.20	5.18	5.15	6	5.00
	5:49		Middle	2.0	22.90	22.90		8.41	8.41		31.98	31.98		73.6	73.9		5.25	5.29		5.12	5.10		4	
4/11/2015	6:00	Cloudy	Middle	2.5	24.40	24.40	24.35	8.21	8.21	8.23	31.74	31.74	31.74	75.4	76.7	76.6	5.26	5.36	5.35	5.26	5.33	5.21	5	5.50
	6:01		Middle	2.5	24.30	24.30		8.25	8.25		31.74	31.74		77.0	77.3		5.36	5.40		5.15	5.10		6	
6/11/2015	8:53	Fine	Middle	2.5	25.60	25.60	25.60	8.34	8.34	8.35	32.57	32.57	32.58	74.2	72.4	71.9	5.04	4.92	4.89	9.17	9.16	<u>9.16</u>	4	5.00
	8:55		Middle	2.5	25.60	25.60		8.36	8.36		32.59	32.59		71.0	70.0		4.82	4.76		9.16	9.16		6	
9/11/2015	10:41	Fine	Middle	2.5	26.80	26.80	26.90	8.25	8.25	8.27	32.72	32.72	32.68	70.9	68.5	68.4	4.71	4.55	4.54	8.53	8.60	8.58	5	5.00
	10:43		Middle	2.5	27.00	27.00		8.29	8.29		32.63	32.63		67.4	66.6		4.48	4.40		8.59	8.58		5	
11/11/2015	11:00	Cloudy	Middle	2.5	25.10	25.10	25.05	8.32	8.32	8.34	32.81	32.81	32.82	93.3	91.8	91.6	6.40	6.29	6.28	9.12	9.13	<u>9.13</u>	4	4.50
	11:02		Middle	2.5	25.00	25.00		8.36	8.36		32.82	32.82		90.8	90.4		6.22	6.20		9.13	9.13		5	
13/11/2015	13:42	Cloudy	Middle	2.5	25.90	25.90	25.90	8.43	8.43	8.43	32.91	32.91	32.89	76.9	76.7	77.0	5.19	5.17	5.19	5.32	5.30	5.25	4	5.00
	13:44		Middle	2.5	25.90	25.90		8.42	8.42		32.87	32.87		77.4	77.0		5.22	5.17		5.25	5.12		6	
17/11/2015	3:10	Cloudy	Middle	2.5	25.20	25.20	25.25	8.28	8.28	8.29	32.66	32.66	32.67	73.6	76.7	75.6	5.03	5.24	5.16	5.21	5.23	5.18	3	3.50
	3:11		Middle	2.5	25.30	25.30		8.30	8.30		32.67	32.67		76.5	75.5		5.22	5.16		5.19	5.10		4	
19/11/2015	5:10	Cloudy	Middle	2.0	25.40	25.40	25.45	8.25	8.25	8.26	31.23	31.23	31.24	76.6	76.9	77.1	5.26	5.27	5.30	3.66	3.63	3.70	2	2.00
	5:11		Middle	2.0	25.50	25.50		8.27	8.27		31.25	31.25		77.6	77.4		5.35	5.31		3.73	3.78		2	
21/11/2015	21:03	Cloudy	Middle	2.5	24.90	24.90	24.90	8.41	8.42	8.42	32.91	32.91	32.91	78.0	78.5	77.9	5.38	5.42	5.38	3.49	3.51	3.50	4	3.50
	21:04		Middle	2.5	24.90	24.90		8.42	8.42		32.91	32.91		77.9	77.2		5.37	5.36		3.53	3.47		3	
23/11/2015	10:37	Fine	Middle	3.5	25.70	25.70	25.75	8.28	8.28	8.30	32.42	32.42	32.42	90.1	89.7	86.0	6.12	6.02	5.82	5.65	5.63	5.58	5	5.00
	10:39		Middle	3.5	25.80	25.80		8.32	8.32		32.41	32.41		80.3	83.7		5.45	5.68		5.55	5.50		5	
25/11/2015	10:53	Fine	Middle	2.5	25.20	25.20	25.25	8.32	8.32	8.35	32.81	32.81	32.79	82.9	81.6	79.9	5.66	5.57	5.46	9.72	9.71	<u>9.73</u>	5	5.00
	10:55		Middle	2.5	25.30	25.30		8.37	8.37		32.77	32.77		77.3	77.8		5.28	5.32		9.74	9.76		5	
27/11/2015	14:12	Fine	Middle	2.5	22.40	22.40	22.40	8.33	8.33	8.35	32.67	32.67	32.67	80.0	78.7	78.7	5.75	5.65	5.66	5.05	4.97	4.97	5	4.50
	14:14		Middle	2.5	22.40	22.40		8.37	8.37		32.66	32.66		78.3	77.9		5.63	5.60		4.93	4.91		4	

Remarks:
Single underline denotes exceedance over Action Level.
Double underline denotes exceedance over Limit Level.



**Water Monitoring Result at P3 - APA
Mid-Ebb Tide**

Date	Time	Weather Condition	Sampling Depth		Water Temperature		pH			Salinity		DO Saturation		DO		Turbidity		Suspended Solids						
					°C		-		ppt		%		mg/L		NTU		mg/L							
			m	Value	Average	Value	Average	Value	Average	Value	Average	Value	Average	Value	Average	Value	Average	Value	Average					
28/10/2015	11:30	Fine	Middle	2.5	27.40	27.40	27.45	8.35	8.35	8.36	32.09	32.09	32.09	87.8	90.1	89.0	5.80	5.95	5.88	8.10	8.15	8.17	5	5.00
	11:32		Middle	2.5	27.50	27.50		8.36	8.36		32.08	32.08		89.0	88.9		5.88	5.87		5.88	8.18		8.23	
30/10/2015	14:34	Fine	Middle	2.5	27.00	27.00	27.05	8.37	8.37	8.38	31.29	31.29	31.29	78.8	77.7	77.8	5.27	5.29	5.22	5.19	5.19	5.19	3	3.50
	14:36		Middle	2.5	27.10	27.10		8.38	8.38		31.29	31.29		78.6	76.2		5.22	5.09		5.22	5.19		5.19	
2/11/2015	5:53	Cloudy	Middle	2.0	23.10	23.10	23.10	8.45	8.45	8.45	32.24	32.24	32.24	75.7	76.0	75.8	5.39	5.41	5.40	4.71	4.79	4.71	7	6.50
	5:54		Middle	2.0	23.10	23.10		8.45	8.45		32.24	32.24		75.4	76.1		5.37	5.43		5.40	4.69		4.66	
4/11/2015	6:04	Cloudy	Middle	2.5	24.50	24.50	24.45	8.44	8.44	8.44	32.71	32.71	32.72	74.6	76.3	75.3	5.17	5.29	5.22	3.67	3.71	3.74	4	4.50
	6:05		Middle	2.5	24.40	24.40		8.44	8.44		32.72	32.72		75.3	75.1		5.22	5.21		5.22	3.70		3.87	
6/11/2015	8:57	Fine	Middle	2.5	25.60	25.60	25.55	8.37	8.37	8.38	32.43	32.43	32.55	76.2	75.1	75.4	5.18	5.11	5.13	8.10	8.10	8.24	5	4.50
	8:59		Middle	2.5	25.50	25.50		8.38	8.38		32.66	32.66		75.5	74.7		5.14	5.09		5.13	8.52		8.24	
9/11/2015	10:45	Fine	Middle	2.5	26.60	26.60	26.65	8.31	8.31	8.32	32.42	32.42	32.36	73.3	71.7	70.6	4.89	4.79	4.72	8.78	8.77	8.78	8	8.00
	10:47		Middle	2.5	26.70	26.70		8.32	8.32		32.30	32.30		69.5	67.9		4.64	4.54		4.72	8.77		8.79	
11/11/2015	11:05	Cloudy	Middle	2.5	25.20	25.20	25.20	8.38	8.38	8.39	32.88	32.88	32.89	87.2	87.6	86.5	5.95	5.97	5.95	8.60	8.61	8.64	6	6.00
	11:07		Middle	2.5	25.20	25.20		8.40	8.40		32.89	32.89		86.9	84.3		5.93	5.93		5.95	8.67		8.68	
13/11/2015	13:46	Cloudy	Middle	2.5	25.60	25.60	25.65	8.42	8.42	8.42	32.81	32.81	32.81	81.3	81.3	80.5	5.51	5.51	5.46	5.98	5.93	5.96	4	4.00
	13:48		Middle	2.5	25.70	25.70		8.42	8.42		32.81	32.81		80.4	78.9		5.45	5.35		5.46	5.94		5.99	
17/11/2015	3:17	Cloudy	Middle	2.5	25.20	25.20	25.25	8.35	8.35	8.36	32.73	32.73	32.74	72.9	73.4	73.0	4.98	5.01	4.98	5.64	5.69	5.74	5	5.00
	3:18		Middle	2.5	25.30	25.30		8.36	8.36		32.74	32.74		73.1	72.4		5.00	4.94		4.98	5.81		5.83	
19/11/2015	5:16	Cloudy	Middle	2.0	25.40	25.40	25.40	8.32	8.32	8.32	31.27	31.27	31.28	80.4	81.3	81.1	5.52	5.58	5.57	3.60	3.62	3.57	3	3.00
	5:17		Middle	2.0	25.40	25.40		8.32	8.32		31.28	31.28		80.9	81.6		5.56	5.60		5.57	3.51		3.53	
21/11/2015	21:09	Cloudy	Middle	2.5	24.90	24.90	24.90	8.35	8.35	8.36	32.77	32.77	32.77	76.1	78.9	78.6	5.24	5.44	5.41	5.33	5.40	5.29	6	5.50
	21:10		Middle	2.5	24.90	24.90		8.37	8.37		32.77	32.77		79.4	79.8		5.47	5.50		5.41	5.29		5.15	
23/11/2015	10:44	Fine	Middle	3.5	25.40	25.40	25.50	8.33	8.33	8.34	32.41	32.41	32.41	81.4	82.7	82.6	5.55	5.64	5.53	5.86	5.65	5.72	5	5.50
	10:46		Middle	3.5	25.60	25.60		8.34	8.34		32.40	32.40		83.7	82.5		5.30	5.62		5.53	5.65		5.70	
25/11/2015	10:57	Fine	Middle	2.5	25.00	25.00	25.03	8.39	8.39	8.39	32.75	32.75	32.75	70.9	71.6	71.1	4.87	4.91	4.92	8.77	8.58	8.59	7	6.50
	10:59		Middle	2.5	25.10	25.00		8.39	8.39		32.74	32.74		71.8	70.1		4.93	4.95		4.92	8.55		8.46	
27/11/2015	14:16	Fine	Middle	2.5	22.60	22.60	22.60	8.38	8.38	8.36	32.61	32.61	32.62	79.3	78.0	77.3	5.67	5.58	5.53	5.21	5.22	5.22	3	3.50
	14:18		Middle	2.5	22.60	22.60		8.34	8.34		32.62	32.62		76.3	75.5		5.46	5.40		5.53	5.22		5.21	

Remarks:
Single underline denotes exceedance over Action Level.
Double underline denotes exceedance over Limit Level.



**Water Monitoring Result at P4 - SOC
Mid-Ebb Tide**

Date	Time	Weather Condition	Sampling Depth		Water Temperature		pH			Salinity		DO Saturation		DO		Turbidity		Suspended Solids						
					°C		-		ppt		%		mg/L		NTU		mg/L							
					Value	Average	Value	Average	Value	Average	Value	Average	Value	Average	Value	Average	Value	Average						
28/10/2015	11:35	Fine	Middle	2.5	27.50	27.50	27.55	8.36	8.36	8.36	32.00	32.00	32.00	84.8	87.8	86.6	5.59	5.79	5.71	8.07	8.00	7.99	5	5.00
	11:37		Middle	2.5	27.60	27.60		8.36	8.36		32.00	32.00		87.3	86.4		5.76	5.70		7.96	7.94		5	
30/10/2015	14:38	Fine	Middle	2.5	27.00	27.00	27.00	8.39	8.39	8.39	31.36	31.36	31.36	81.7	80.4	80.5	5.46	5.37	5.38	7.16	7.12	7.12	5	4.00
	14:40		Middle	2.5	27.00	27.00		8.38	8.38		31.36	31.36		80.3	79.4		5.37	5.31		7.10	7.09		3	
2/11/2015	5:58	Cloudy	Middle	2.0	23.20	23.20	23.20	8.47	8.47	8.47	32.25	32.25	32.25	80.4	80.7	80.9	5.72	5.75	5.76	6.62	6.58	6.54	7	6.50
	5:59		Middle	2.0	23.20	23.20		8.47	8.47		32.25	32.25		80.9	81.5		5.74	5.81		6.50	6.47		6	
4/11/2015	6:08	Cloudy	Middle	2.5	24.50	24.50	24.45	8.46	8.46	8.46	32.70	32.70	32.70	74.0	74.6	74.4	5.13	5.17	5.16	3.57	3.82	3.63	4	4.50
	6:09		Middle	2.5	24.40	24.40		8.46	8.46		32.70	32.70		74.2	74.7		5.15	5.18		3.73	3.39		5	
6/11/2015	9:01	Fine	Middle	2.5	25.60	25.60	25.60	8.39	8.39	8.39	32.63	32.63	32.63	77.9	75.8	75.3	5.29	5.15	5.12	8.82	8.82	8.83	4	4.00
	9:03		Middle	2.5	25.60	25.60		8.39	8.39		32.63	32.63		74.4	72.9		5.06	4.96		8.84	8.83		4	
9/11/2015	10:49	Fine	Middle	2.5	26.90	26.90	26.90	8.33	8.33	8.33	32.56	32.56	32.57	72.6	71.3	72.1	4.83	4.74	4.79	8.82	8.77	8.74	9	8.50
	10:51		Middle	2.5	26.90	26.90		8.33	8.33		32.57	32.57		72.0	72.3		4.79	4.81		8.73	8.63		8	
11/11/2015	11:10	Cloudy	Middle	2.5	25.50	25.50	25.40	8.40	8.40	8.40	32.88	32.88	32.88	84.9	87.2	86.9	5.79	5.98	5.94	9.41	9.27	<u>9.32</u>	5	6.00
	11:12		Middle	2.5	25.30	25.30		8.40	8.40		32.88	32.88		88.0	87.3		6.00	5.97		9.26	9.32		7	
13/11/2015	13:50	Cloudy	Middle	2.5	25.60	25.60	25.60	8.42	8.42	8.42	32.82	32.82	32.82	81.0	79.7	78.8	5.50	5.40	5.35	6.82	6.82	6.85	5	5.00
	13:52		Middle	2.5	25.60	25.60		8.42	8.42		32.81	32.81		78.1	76.4		5.30	5.18		6.84	6.92		5	
17/11/2015	3:23	Cloudy	Middle	2.5	25.20	25.20	25.20	8.37	8.37	8.37	32.67	32.67	32.68	78.3	78.7	78.6	5.35	5.38	5.37	7.08	7.06	7.07	4	4.00
	3:24		Middle	2.5	25.20	25.20		8.37	8.37		32.68	32.68		78.9	78.3		5.39	5.35		7.10	7.02		4	
19/11/2015	5:23	Cloudy	Middle	2.0	25.40	25.40	25.40	8.36	8.36	8.37	31.21	31.21	31.22	81.5	82.3	82.8	5.60	5.65	5.69	3.50	4.01	3.88	2	2.00
	5:24		Middle	2.0	25.40	25.40		8.37	8.37		31.22	31.22		83.5	83.9		5.73	5.76		4.03	3.97		2	
21/11/2015	21:18	Cloudy	Middle	2.5	24.90	24.90	24.80	8.43	8.43	8.43	32.80	32.80	32.80	83.5	84.2	84.2	5.75	5.80	5.80	5.70	5.76	5.72	4	4.00
	21:19		Middle	2.5	24.70	24.70		8.43	8.43		32.80	32.80		84.5	84.6		5.82	5.83		5.72	5.68		4	
23/11/2015	10:51	Fine	Middle	3.5	25.50	25.50	25.55	8.35	8.35	8.35	32.33	32.33	32.33	81.4	85.7	85.2	5.96	5.84	5.91	6.06	6.08	6.11	5	4.50
	10:53		Middle	3.5	25.60	25.60		8.35	8.35		32.33	32.33		84.4	89.2		5.75	6.08		6.10	6.18		4	
25/11/2015	11:01	Fine	Middle	2.5	25.20	25.20	25.20	8.39	8.39	8.39	32.62	32.62	32.66	83.8	83.2	81.9	5.73	5.68	5.59	6.66	6.58	6.59	6	6.00
	11:03		Middle	2.5	25.20	25.20		8.39	8.39		32.69	32.69		81.4	79.1		5.56	5.40		6.55	6.55		6	
27/11/2015	14:20	Fine	Middle	2.5	22.90	22.90	22.90	8.40	8.40	8.40	32.56	32.56	32.57	77.4	76.3	77.0	5.52	5.43	5.54	5.20	5.07	5.00	2	3.00
	14:22		Middle	2.5	22.90	22.90		8.40	8.40		32.58	32.58		76.7	77.6		5.67	5.53		4.89	4.84		4	

Remarks:
Single underline denotes exceedance over Action Level.
Double underline denotes exceedance over Limit Level.



**Water Monitoring Result at P5 - WCT / RT / IT
Mid-Ebb Tide**

Date	Time	Weather Condition	Sampling Depth		Water Temperature		pH		Salinity		DO Saturation		DO		Turbidity		Suspended Solids							
					°C		-		ppt		%		mg/L		NTU		mg/L							
			m	Value	Average	Value	Average	Value	Average	Value	Average	Value	Average	Value	Average	Value	Average	Value	Average					
28/10/2015	11:40	Fine	Middle	2.5	27.50	27.50	27.50	8.36	8.36	8.37	31.98	31.98	31.99	86.3	88.5	87.4	5.71	5.85	5.77	7.48	7.49	7.45	6	5.50
	11:42		Middle	2.5	27.50	27.50		8.37	8.37		31.99	31.99		88.2	86.5		5.82	5.71		7.37	7.45		5	
30/10/2015	14:42	Fine	Middle	2.5	27.20	27.20	27.20	8.38	8.38	8.38	31.35	31.35	31.35	74.1	70.6	70.6	4.94	4.70	4.70	7.94	8.18	8.28	5	5.50
	14:44		Middle	2.5	27.20	27.20		8.38	8.38		31.35	31.35		69.0	68.5		4.59	4.56		8.48	8.53		6	
2/11/2015	6:05	Cloudy	Middle	2.0	23.20	23.20	23.15	8.48	8.47	8.47	32.30	32.30	32.30	80.3	80.6	80.4	5.72	5.74	5.72	5.99	5.22	5.36	5	5.50
	6:06		Middle	2.0	23.10	23.10		8.47	8.47		32.30	32.30		80.2	80.3		5.71	5.72		5.13	5.10		6	
4/11/2015	6:18	Cloudy	Middle	2.5	24.50	24.50	24.45	8.46	8.46	8.46	32.84	32.84	32.82	77.9	78.9	77.7	5.41	5.48	5.40	3.89	3.90	3.96	4	4.00
	6:19		Middle	2.5	24.40	24.40		8.47	8.46		32.80	32.80		77.3	76.5		5.37	5.32		4.08	3.98		4	
6/11/2015	9:05	Fine	Middle	2.5	25.90	25.90	25.90	8.39	8.39	8.39	32.61	32.61	32.61	73.7	72.1	71.7	4.98	4.88	4.85	8.21	8.13	8.16	6	5.50
	9:07		Middle	2.5	25.90	25.90		8.39	8.39		32.61	32.61		71.1	70.0		4.81	4.72		8.10	8.18		5	
9/11/2015	10:53	Fine	Middle	2.5	26.90	26.90	26.95	8.33	8.33	8.33	32.51	32.51	32.52	71.0	69.8	68.9	4.72	4.64	4.58	8.90	8.89	8.85	10	9.00
	10:55		Middle	2.5	27.00	27.00		8.33	8.33		32.53	32.53		68.1	66.6		4.53	4.43		8.85	8.77		8	
11/11/2015	11:15	Cloudy	Middle	2.5	25.50	25.50	25.50	8.41	8.41	8.41	32.88	32.88	32.88	82.0	82.5	82.7	5.58	5.61	5.63	8.90	8.94	8.94	8	7.50
	11:17		Middle	2.5	25.50	25.50		8.41	8.41		32.88	32.88		83.2	83.1		5.66	5.65		8.96	8.97		7	
13/11/2015	13:54	Cloudy	Middle	2.5	25.70	25.70	25.70	8.42	8.42	8.42	32.80	32.80	32.80	74.3	72.7	73.0	5.03	4.92	4.94	8.22	8.22	8.26	6	6.00
	13:56		Middle	2.5	25.70	25.70		8.42	8.42		32.80	32.80		71.9	73.1		4.87	4.95		8.28	8.30		6	
17/11/2015	3:32	Cloudy	Middle	2.5	25.20	25.20	25.20	8.38	8.38	8.38	32.54	32.54	32.54	77.1	78.0	77.5	5.27	5.33	5.31	6.13	6.20	6.07	3	3.50
	3:33		Middle	2.5	25.20	25.20		8.38	8.38		32.54	32.54		77.7	77.3		5.37	5.28		5.95	6.00		4	
19/11/2015	5:28	Cloudy	Middle	2.0	25.50	25.50	25.50	8.37	8.37	8.37	31.29	31.29	31.29	80.5	81.1	80.6	5.52	5.56	5.52	3.60	3.64	3.61	3	2.50
	5:29		Middle	2.0	25.50	25.50		8.37	8.37		31.29	31.29		80.4	80.2		5.51	5.50		3.62	3.58		2	
21/11/2015	21:28	Cloudy	Middle	2.5	24.90	24.90	24.90	8.43	8.43	8.43	32.80	32.80	32.80	77.5	77.7	77.3	5.33	5.34	5.32	5.12	5.10	4.95	6	5.50
	21:29		Middle	2.5	24.90	24.90		8.43	8.43		32.80	32.80		77.2	76.9		5.31	5.29		4.89	4.68		5	
23/11/2015	10:58	Fine	Middle	3.5	25.70	25.70	25.70	8.35	8.35	8.35	32.33	32.33	32.33	82.7	82.8	82.5	5.62	5.63	5.61	7.32	7.16	7.18	8	7.00
	11:00		Middle	3.5	25.70	25.70		8.35	8.35		32.33	32.33		82.2	82.3		5.58	5.60		7.16	7.07		6	
25/11/2015	11:05	Fine	Middle	2.5	25.40	25.40	25.40	8.40	8.40	8.42	32.68	32.68	32.68	71.6	70.5	70.3	4.88	4.81	4.79	6.54	6.27	6.33	5	5.50
	11:07		Middle	2.5	25.40	25.40		8.43	8.43		32.68	32.68		69.6	69.5		4.74	4.74		6.27	6.24		6	
27/11/2015	14:24	Fine	Middle	2.5	23.20	23.20	23.20	8.40	8.40	8.40	32.59	32.59	32.61	73.2	71.8	71.7	5.59	5.08	5.19	5.57	5.51	5.52	5	5.00
	14:26		Middle	2.5	23.20	23.20		8.40	8.40		32.63	32.63		71.2	70.4		5.05	5.02		5.52	5.49		5	

Remarks:
Single underline denotes exceedance over Action Level.
Double underline denotes exceedance over Limit Level.



**Water Monitoring Result at RW21-P789 - Sun Hung Kai Centre
Mid-Ebb Tide**

Date	Time	Weather Condition	Sampling Depth		Water Temperature		pH			Salinity		DO Saturation		DO		Turbidity		Suspended Solids						
					°C		-		ppt		%		mg/L		NTU		mg/L							
			m	Value	Average	Value	Average	Value	Average	Value	Average	Value	Average	Value	Average	Value	Average	Value	Average					
28/10/2015	11:49	Fine	Middle	3.0	27.60	27.60	27.60	8.36	8.36	8.37	32.14	32.14	32.14	93.9	92.5	91.9	6.19	6.09	6.06	5.30	5.28	5.26	3	3.50
	11:51		Middle	3.0	27.60	27.60	27.60	8.37	8.37	8.37	32.14	32.14	32.14	91.0	90.3	91.9	5.99	5.95	6.06	5.25	5.22	5.26	4	
30/10/2015	15:07	Fine	Middle	3.5	26.90	26.90	26.95	8.36	8.36	8.37	31.58	31.58	31.64	80.7	80.2	79.8	5.39	5.36	5.33	6.42	6.28	6.31	4	4.50
	15:09		Middle	3.5	27.00	27.00	26.95	8.37	8.37	8.37	31.69	31.69	31.64	79.1	79.1	79.8	5.28	5.28	5.33	6.27	6.27	6.31	5	
2/11/2015	5:01	Cloudy	Middle	3.0	23.20	23.20	23.20	8.34	8.34	8.34	31.68	31.68	31.68	62.6	63.1	62.8	4.47	4.50	4.48	4.52	4.57	4.59	4	4.00
	5:02		Middle	3.0	23.20	23.20	23.20	8.33	8.33	8.34	31.68	31.68	31.68	62.9	62.5	62.8	4.49	4.47	4.48	4.55	4.70	4.59	4	
4/11/2015	5:20	Cloudy	Middle	3.5	24.80	24.80	24.80	8.36	8.36	8.36	32.65	32.65	32.65	76.7	76.5	76.0	5.29	5.29	5.24	3.36	3.49	3.25	2	2.50
	5:21		Middle	3.5	24.80	24.80	24.80	8.36	8.36	8.36	32.65	32.65	32.65	75.6	75.1	76.0	5.21	5.18	5.24	3.07	3.09	3.25	3	
6/11/2015	9:30	Fine	Middle	3.5	25.70	25.70	25.65	8.39	8.39	8.39	32.58	32.58	32.61	68.7	69.3	69.3	4.67	4.70	4.76	6.45	6.43	6.41	4	4.00
	9:32		Middle	3.5	25.60	25.60	25.65	8.39	8.39	8.39	32.63	32.63	32.61	70.6	68.7	69.3	4.79	4.86	4.76	6.41	6.34	6.41	4	
9/11/2015	11:17	Fine	Middle	3.5	26.90	26.90	26.95	8.28	8.28	8.29	32.65	32.65	32.65	71.0	70.3	70.2	4.71	4.67	4.66	7.21	7.19	7.19	4	4.50
	11:19		Middle	3.5	27.00	27.00	26.95	8.30	8.30	8.29	32.64	32.64	32.65	69.9	69.6	70.2	4.64	4.62	4.66	7.19	7.18	7.19	5	
11/11/2015	11:45	Cloudy	Middle	3.5	25.70	25.70	25.70	8.41	8.41	8.42	32.95	32.95	32.95	80.7	82.0	82.2	5.47	5.55	5.56	7.38	7.36	7.37	4	4.00
	11:47		Middle	3.5	25.70	25.70	25.70	8.42	8.42	8.42	32.95	32.95	32.95	80.6	85.4	82.2	5.43	5.78	5.56	7.36	7.38	7.37	4	
13/11/2015	14:15	Cloudy	Middle	3.5	25.70	25.70	25.70	8.41	8.41	8.41	32.86	32.86	32.86	72.7	71.7	72.2	4.93	4.86	4.90	7.07	7.00	7.07	5	5.00
	14:17		Middle	3.5	25.70	25.70	25.70	8.41	8.41	8.41	32.85	32.85	32.86	72.1	72.4	72.2	4.89	4.91	4.90	7.11	7.09	7.07	5	
17/11/2015	2:25	Cloudy	Middle	3.5	25.50	25.50	25.55	8.28	8.28	8.29	32.71	32.71	32.72	71.0	71.5	70.9	4.82	4.86	4.81	5.32	5.22	5.27	3	3.50
	2:26		Middle	3.5	25.60	25.60	25.55	8.29	8.29	8.29	32.73	32.73	32.72	70.6	70.3	70.9	4.80	4.77	4.81	5.30	5.22	5.27	4	
19/11/2015	6:30	Cloudy	Middle	3.0	25.50	25.50	25.50	8.11	8.11	8.12	31.05	31.05	31.06	77.9	78.0	77.4	5.35	5.36	5.32	5.56	5.45	5.46	3	3.00
	6:31		Middle	3.0	25.50	25.50	25.50	8.13	8.13	8.12	31.07	31.07	31.06	77.1	76.7	77.4	5.30	5.27	5.32	5.47	5.37	5.46	3	
21/11/2015	18:55	Cloudy	Middle	3.5	25.10	25.10	25.05	8.35	8.35	8.37	32.86	32.86	32.86	75.9	77.7	76.9	5.20	5.32	5.27	6.26	6.29	6.37	6	5.50
	18:56		Middle	3.5	25.00	25.00	25.05	8.39	8.39	8.37	32.86	32.86	32.86	76.8	77.0	76.9	5.27	5.29	5.27	6.42	6.50	6.37	5	
23/11/2015	11:15	Fine	Middle	3.0	25.90	25.90	25.95	8.32	8.32	8.33	32.54	32.54	32.54	87.6	86.8	86.3	5.92	5.78	5.81	5.76	5.77	5.79	6	6.00
	11:17		Middle	3.0	26.00	26.00	25.95	8.34	8.34	8.33	32.54	32.54	32.54	85.8	85.0	86.3	5.80	5.74	5.81	5.80	5.84	5.84	6	
25/11/2015	11:29	Fine	Middle	3.5	25.20	25.20	25.20	8.37	8.37	8.38	32.79	32.79	32.78	81.1	77.6	76.7	5.55	5.30	5.25	7.72	7.68	7.69	7	6.50
	11:31		Middle	3.5	25.20	25.20	25.20	8.39	8.39	8.38	32.77	32.77	32.78	74.5	73.6	76.7	5.12	5.03	5.25	7.67	7.69	7.69	6	
27/11/2015	14:48	Fine	Middle	3.5	23.50	23.50	23.45	8.37	8.37	8.38	32.68	32.68	32.71	75.3	74.0	73.7	5.31	5.21	5.20	5.94	5.94	5.94	4	4.50
	14:50		Middle	3.5	23.40	23.40	23.45	8.39	8.39	8.38	32.73	32.73	32.71	72.7	72.9	73.7	5.12	5.14	5.20	5.94	5.94	5.94	5	

Remarks:
Single underline denotes exceedance over Action Level.
Double underline denotes exceedance over Limit Level.



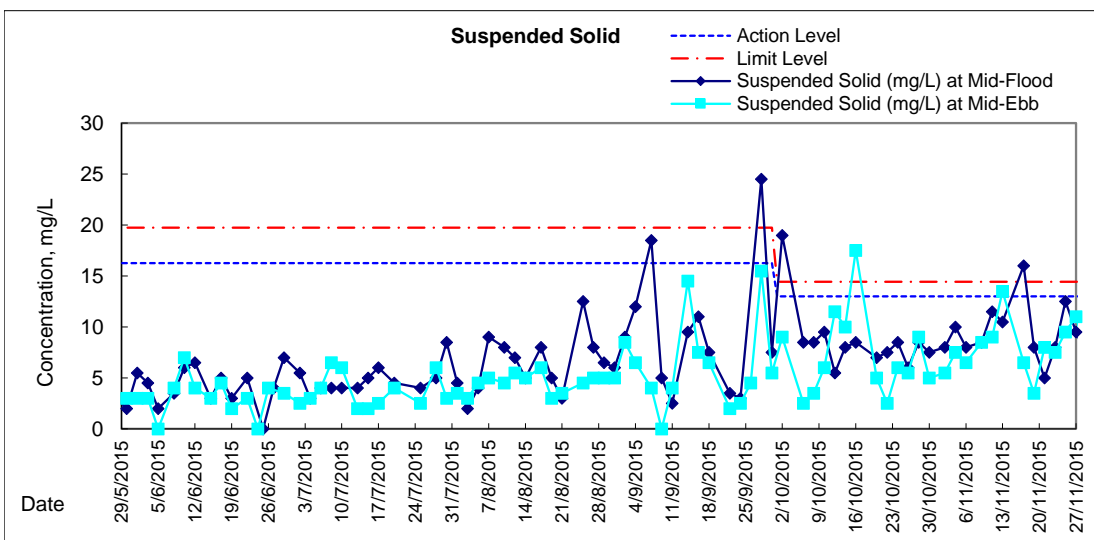
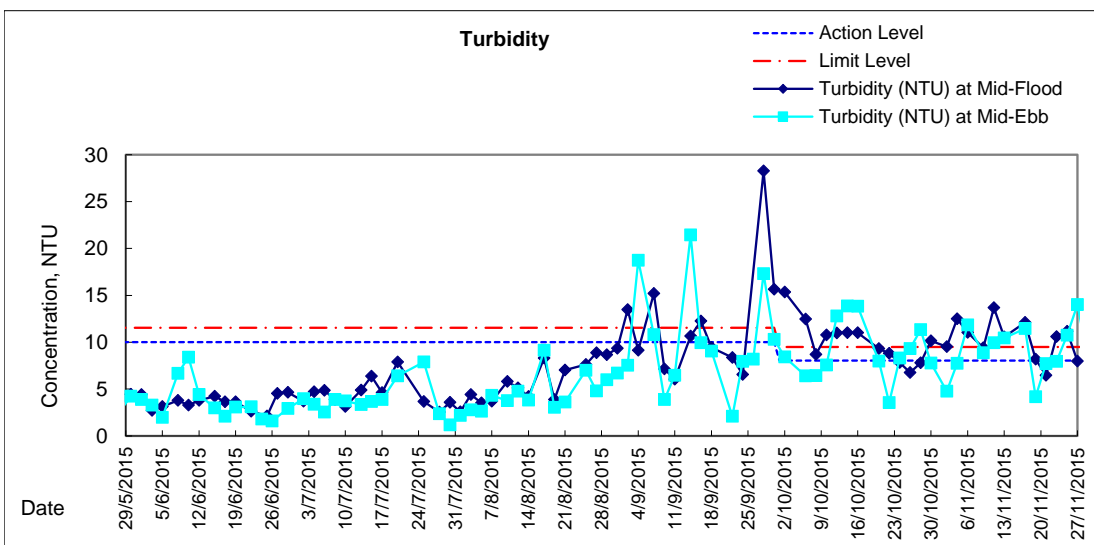
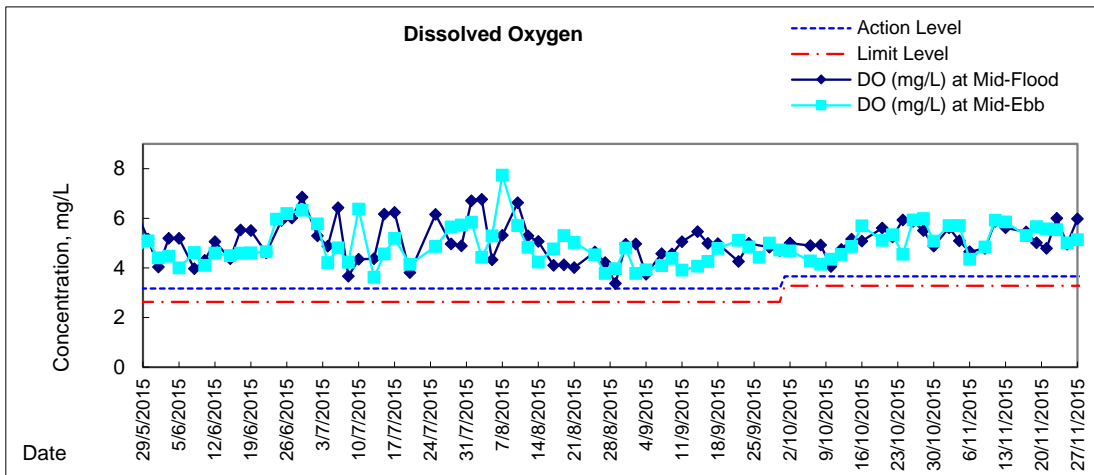
**Water Monitoring Result at WSD19 - Sheung Wan
Mid-Ebb Tide**

Date	Time	Weather Condition	Sampling Depth		Water Temperature		pH			Salinity		DO Saturation		DO		Turbidity		Suspended Solids						
					°C		-		ppt		%		mg/L		NTU		mg/L							
			m	Value	Average	Value	Average	Value	Average	Value	Average	Value	Average	Value	Average	Value	Average	Value	Average					
28/10/2015	10:25	Fine	Middle	3.5	27.40	27.40	27.45	8.32	8.32	8.33	31.60	31.60	31.60	91.3	90.4	90.4	6.05	5.99	5.99	11.36	11.33	<u>11.34</u>	8	9.00
	10:27		Middle	3.5	27.50	27.50		8.34	8.34		31.60	31.60		89.1	90.6		5.90	6.00		11.32	11.33		10	
30/10/2015	13:35	Fine	Middle	3.5	27.30	27.30	27.30	8.59	8.59	8.56	31.18	31.18	31.17	77.0	76.3	76.2	5.13	5.08	5.08	7.77	7.77	7.77	4	5.00
	13:37		Middle	3.5	27.30	27.30		8.52	8.52		31.16	31.16		76.3	75.3		5.08	5.02		7.77	7.77		6	
2/11/2015	6:31	Cloudy	Middle	2.0	23.10	23.10	23.05	8.26	8.26	8.27	31.73	31.73	31.72	80.0	80.2	79.9	5.72	5.73	5.71	4.86	4.71	4.78	5	5.50
	6:32		Middle	2.0	23.00	23.00		8.27	8.27		31.70	31.70		79.9	79.4		5.71	5.67		4.80	4.73		6	
4/11/2015	6:45	Cloudy	Middle	2.5	24.70	24.70	24.75	8.18	8.18	8.19	32.31	32.31	32.31	81.8	83.1	82.3	5.67	5.75	5.70	7.87	7.78	7.74	8	7.50
	6:46		Middle	2.5	24.80	24.80		8.20	8.19		32.31	32.31		81.2	82.9		5.65	5.74		7.66	7.63		7	
6/11/2015	8:03	Fine	Middle	3.5	26.10	26.10	26.10	8.58	8.58	8.54	32.93	32.93	32.90	64.8	65.3	64.6	4.36	4.39	4.34	12.00	11.93	<u>11.84</u>	6	6.50
	8:05		Middle	3.5	26.10	26.10		8.50	8.50		32.86	32.86		63.9	64.2		4.30	4.32		11.76	11.68		7	
9/11/2015	9:58	Fine	Middle	3.5	26.70	26.70	26.75	8.26	8.26	8.28	32.58	32.58	32.58	73.2	73.5	72.7	4.88	4.90	4.84	8.81	8.87	<u>8.86</u>	8	8.50
	10:00		Middle	3.5	26.80	26.80		8.30	8.30		32.57	32.57		73.0	70.9		4.87	4.72		8.89	8.87		9	
11/11/2015	10:10	Cloudy	Middle	4.0	25.90	25.90	25.90	8.33	8.33	8.32	32.75	32.75	32.75	87.4	88.6	87.6	5.91	5.97	5.92	9.95	9.95	<u>9.95</u>	9	9.00
	10:12		Middle	4.0	25.90	25.90		8.31	8.31		32.75	32.75		87.3	87.1		5.90	5.89		9.94	9.94		9	
13/11/2015	11:15	Cloudy	Middle	3.5	25.90	25.90	25.90	8.66	8.66	8.60	32.94	32.94	32.95	87.0	87.5	86.7	5.87	5.90	5.85	10.45	10.43	<u>10.44</u>	14	<u>13.50</u>
	11:17		Middle	3.5	25.90	25.90		8.53	8.53		32.96	32.96		86.0	86.3		5.80	5.82		10.43	10.43		13	
17/11/2015	4:17	Cloudy	Middle	2.5	25.50	25.50	25.55	8.34	8.34	8.34	31.84	31.84	31.84	77.8	78.8	77.6	5.31	5.38	5.30	12.04	11.68	<u>11.47</u>	7	6.50
	4:18		Middle	2.5	25.60	25.60		8.34	8.34		31.84	31.84		77.0	76.7		5.26	5.24		11.01	11.13		6	
19/11/2015	5:51	Cloudy	Middle	2.5	25.50	25.50	25.50	8.26	8.26	8.27	30.67	30.67	30.67	82.3	82.4	82.4	5.66	5.67	5.67	4.20	4.18	4.17	4	3.50
	5:52		Middle	2.5	25.50	25.50		8.27	8.27		30.67	30.67		82.1	82.7		5.65	5.68		4.16	4.13		3	
21/11/2015	19:55	Cloudy	Middle	3.0	25.20	25.20	25.15	8.18	8.18	8.20	32.30	32.30	32.31	80.5	81.1	81.1	5.53	5.57	5.57	7.88	7.81	7.72	8	8.00
	19:56		Middle	3.0	25.10	25.10		8.22	8.22		32.31	32.31		81.2	81.4		5.58	5.60		7.61	7.59		8	
23/11/2015	9:30	Fine	Middle	3.5	25.50	25.50	25.50	8.30	8.30	8.31	32.13	32.13	32.14	81.3	82.6	81.3	5.54	5.63	5.54	7.92	7.92	7.93	8	7.50
	9:32		Middle	3.5	25.50	25.50		8.32	8.32		32.14	32.14		81.0	80.2		5.53	5.47		7.93	7.96		7	
25/11/2015	10:11	Fine	Middle	3.5	25.30	25.30	25.30	8.28	8.28	8.29	32.43	32.43	32.43	74.1	73.7	73.3	5.06	5.03	5.01	10.94	10.76	<u>10.75</u>	10	9.50
	10:13		Middle	3.5	25.30	25.30		8.30	8.30		32.43	32.43		73.4	72.1		5.02	4.93		10.69	10.61		9	
27/11/2015	13:11	Fine	Middle	3.5	23.50	23.50	23.60	8.28	8.28	8.29	32.27	32.27	32.28	75.4	73.5	73.0	5.30	5.18	5.14	14.07	13.96	<u>14.02</u>	12	11.00
	13:13		Middle	3.5	23.70	23.70		8.30	8.30		32.29	32.29		71.9	71.2		5.06	5.00		13.99	14.05		10	

Remarks:
Single underline denotes exceedance over Action Level.
Double underline denotes exceedance over Limit Level.

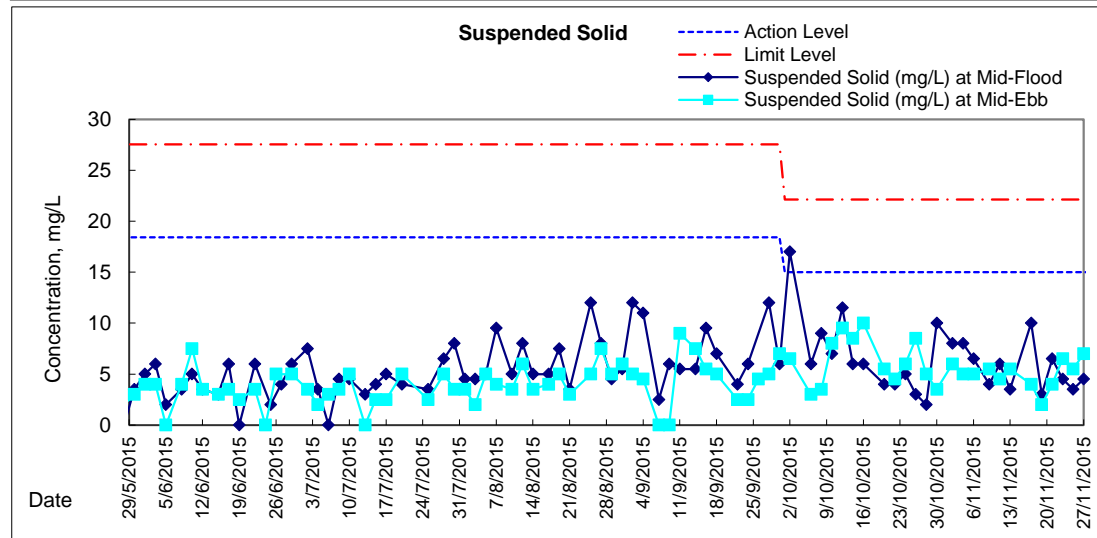
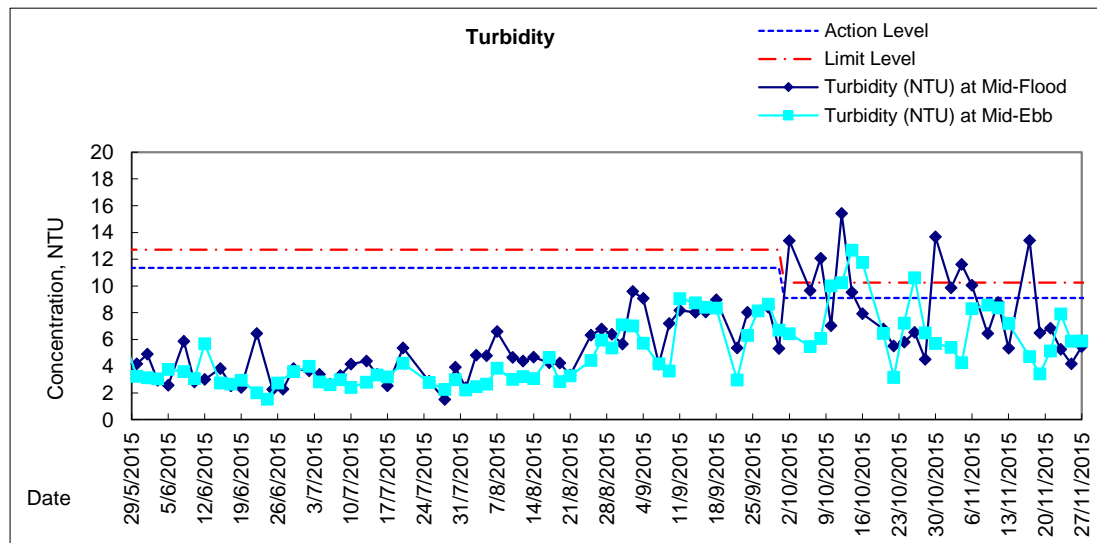
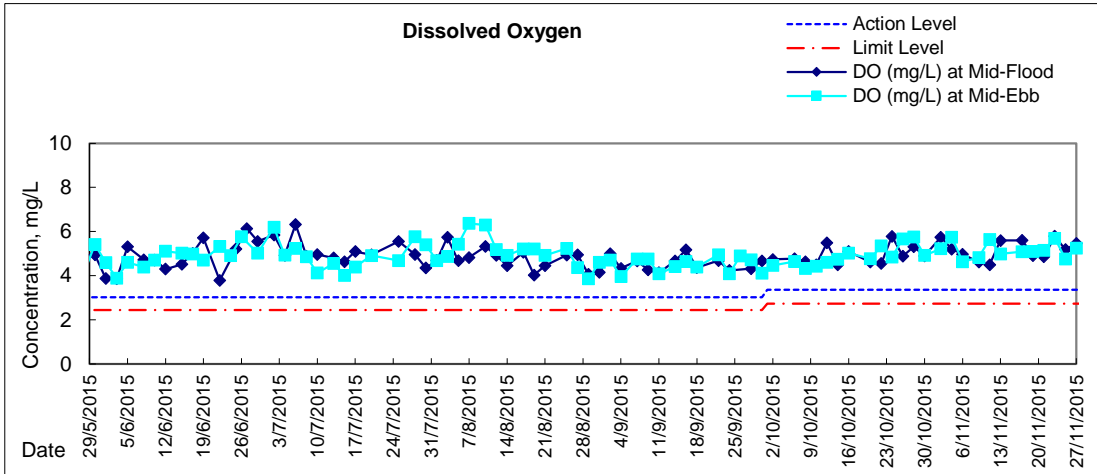


Graphic Presentation of Water Quality Result of WSD19 - Sheung Wan



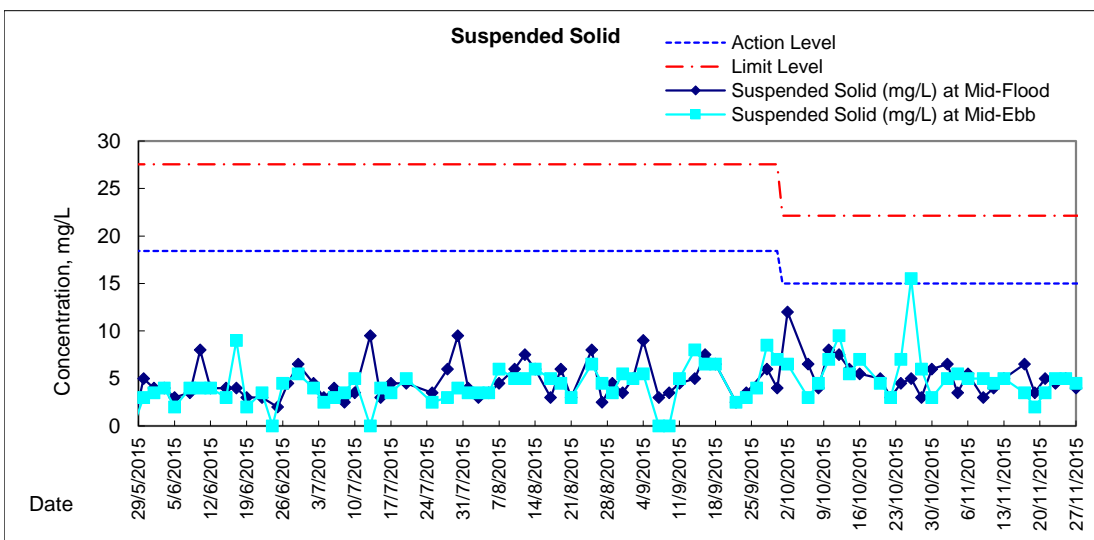
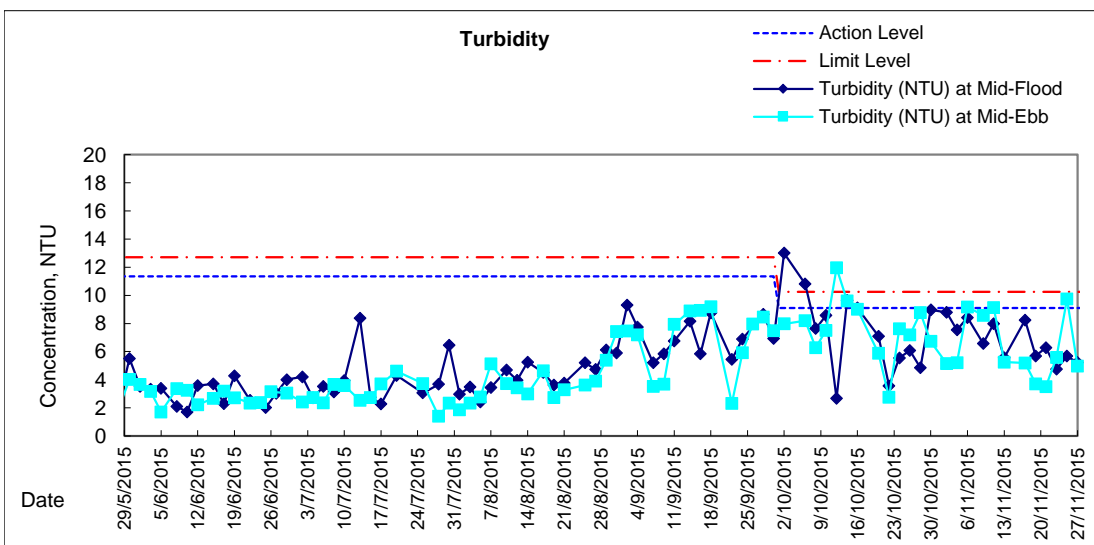
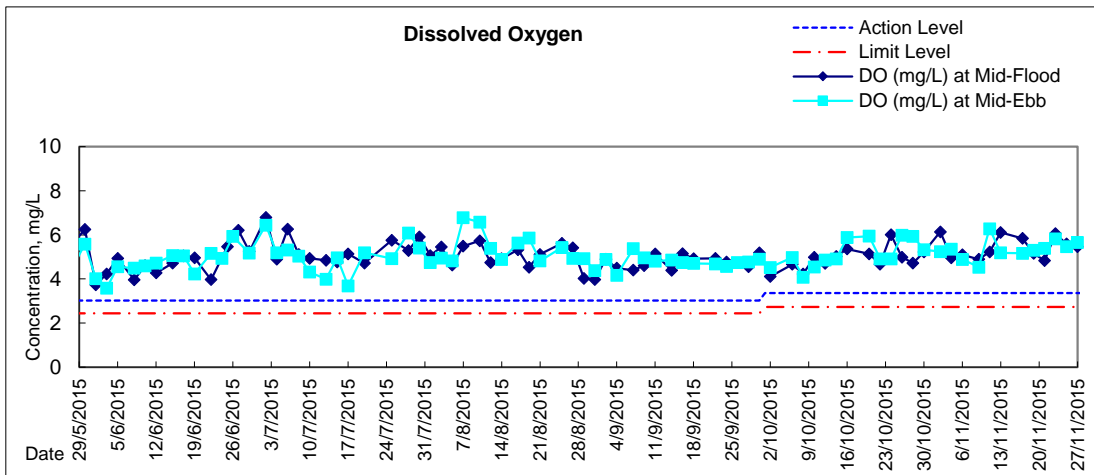


Graphic Presentation of Water Quality Result of C1 - HKCEC



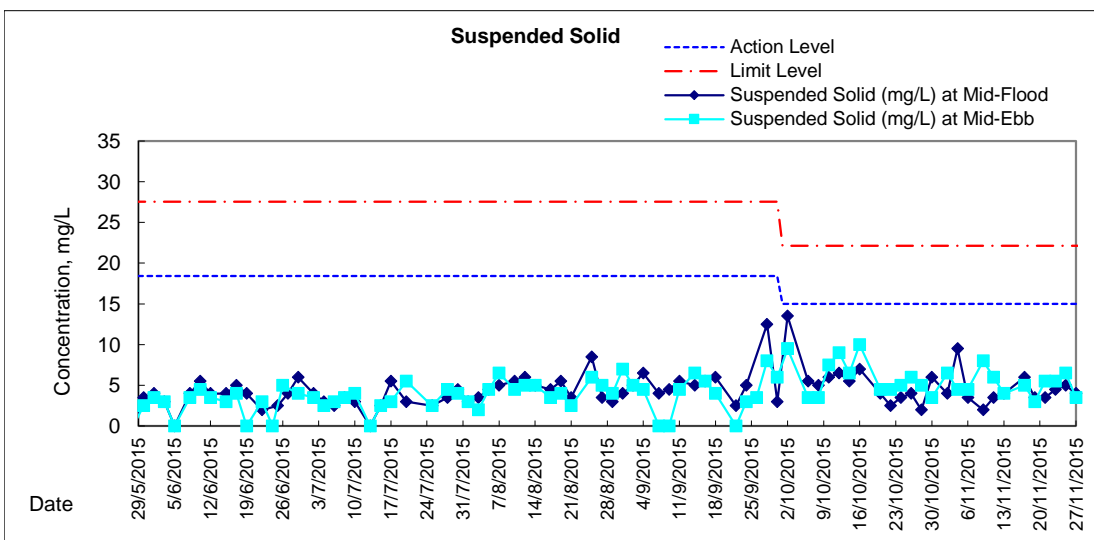
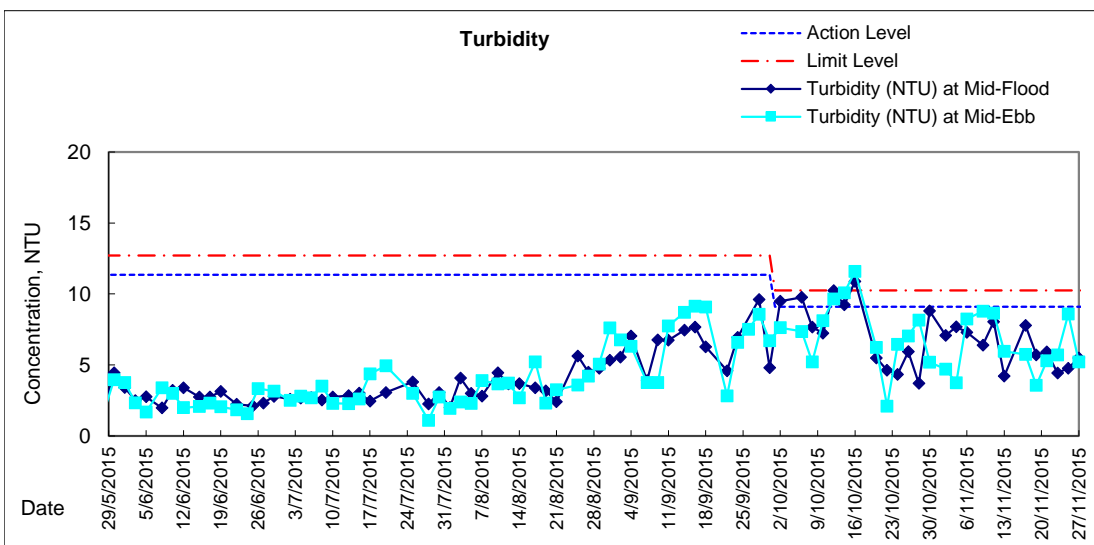
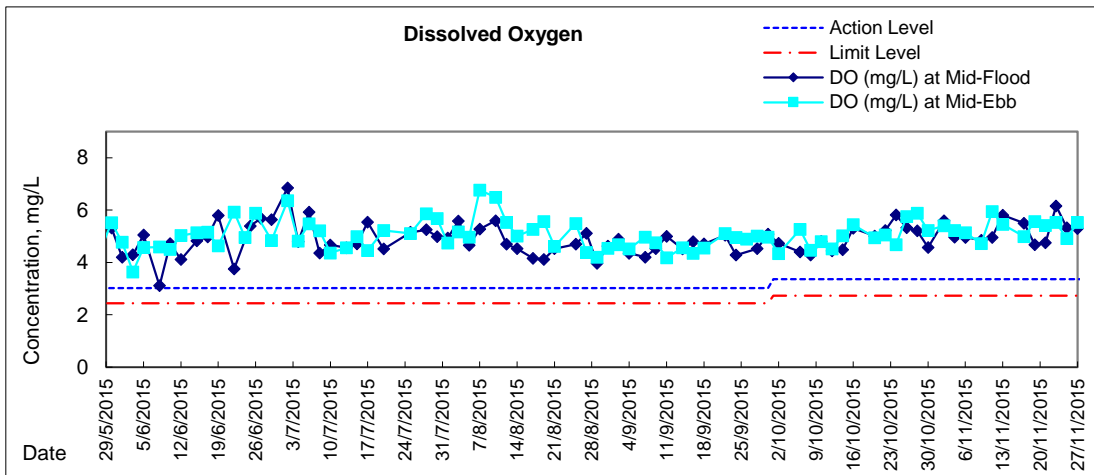


Graphic Presentation of Water Quality Result of P1 - HKCEC Phase I



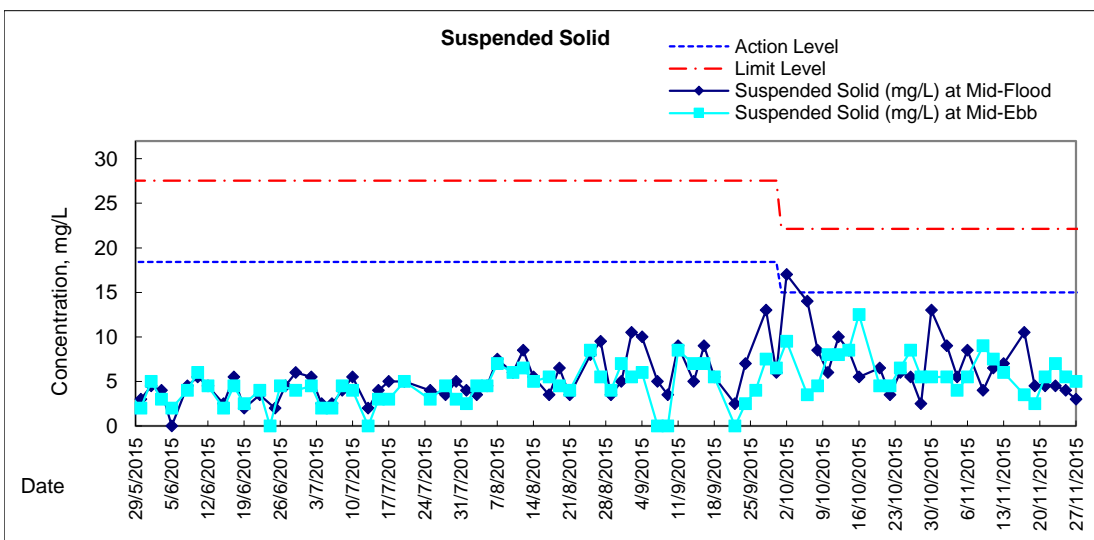
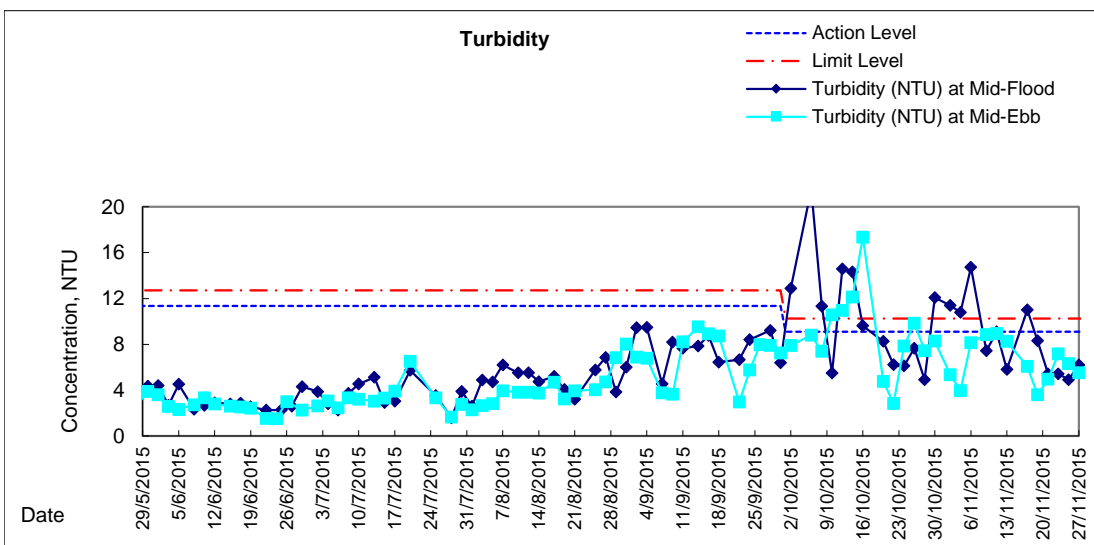
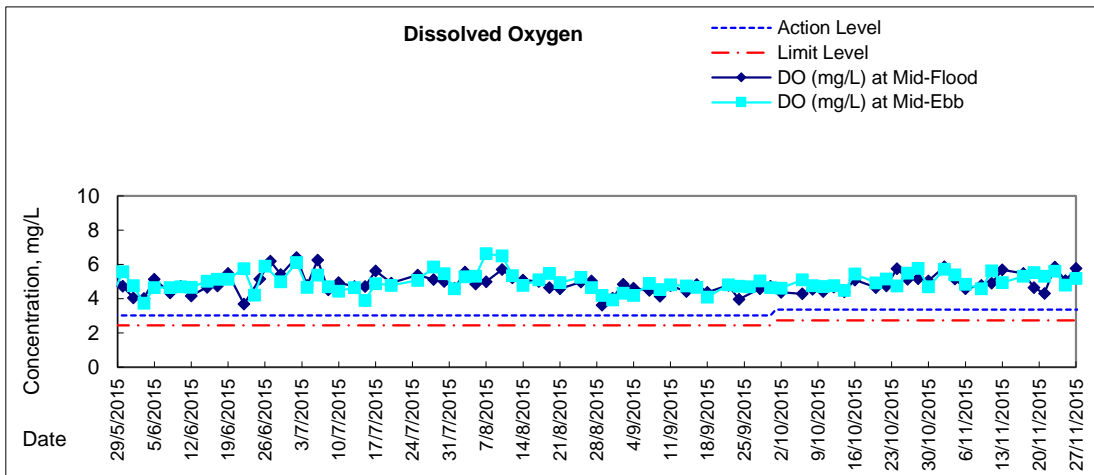


Graphic Presentation of Water Quality Result of P3 - APA



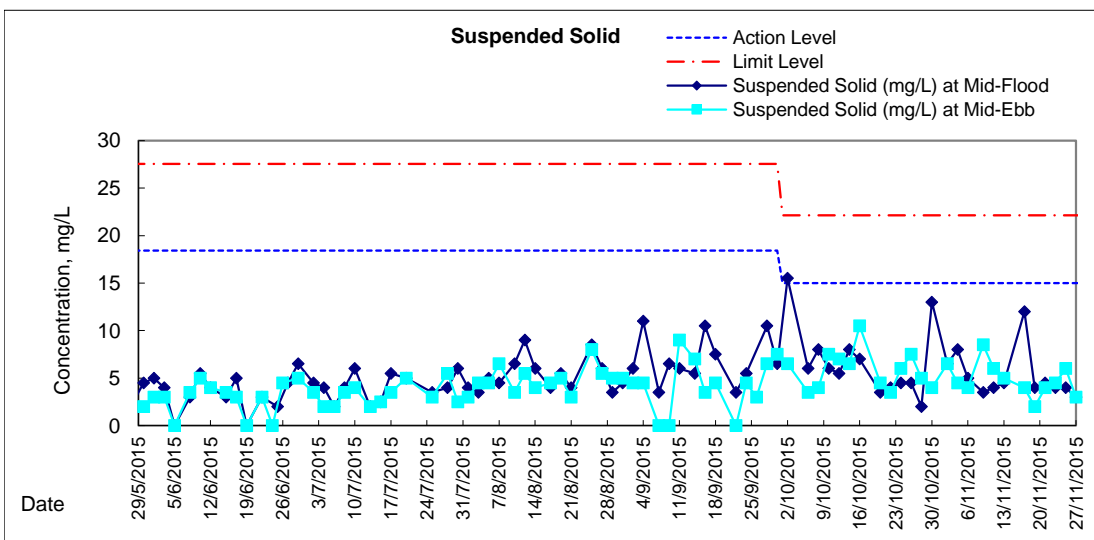
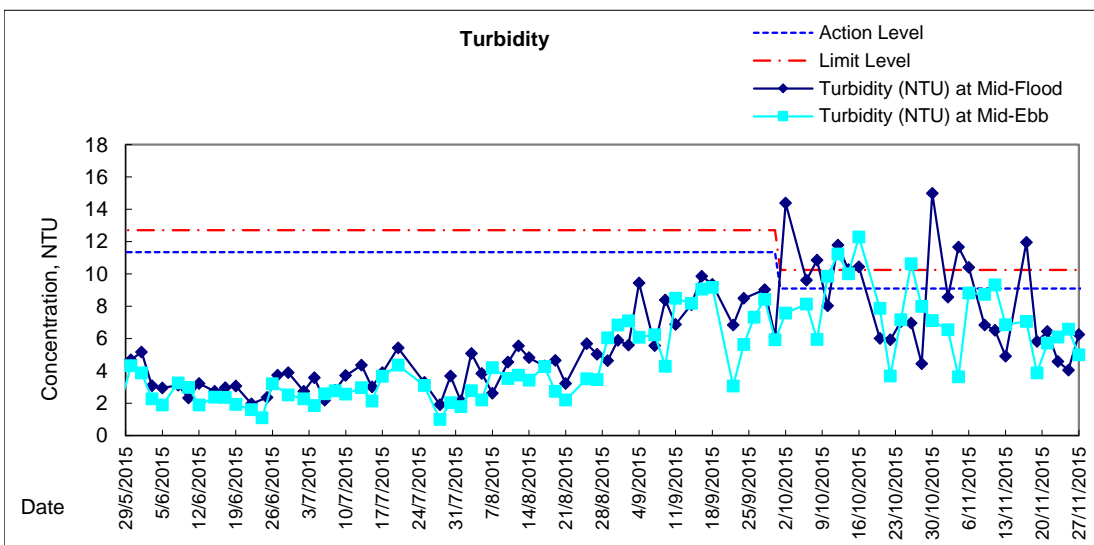
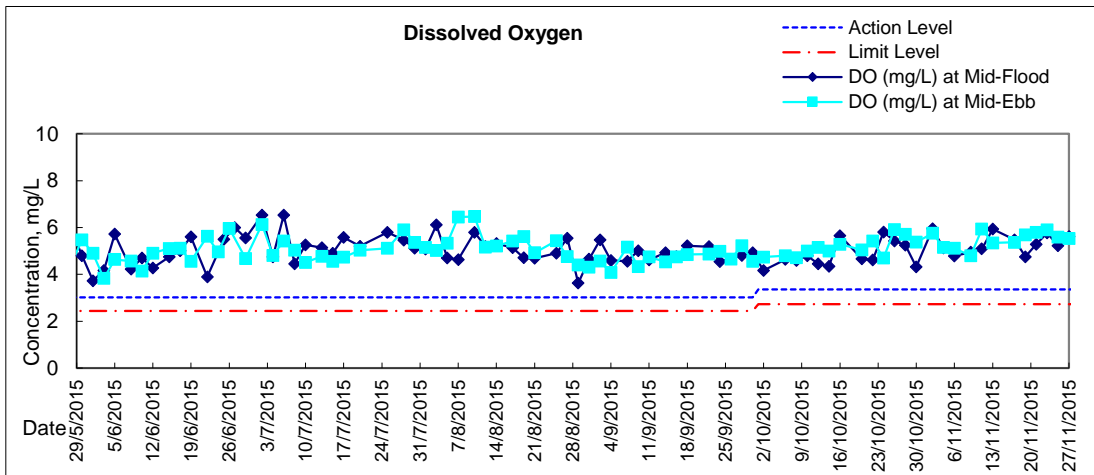


Graphic Presentation of Water Quality Result of P5 - WCT / RT / IT



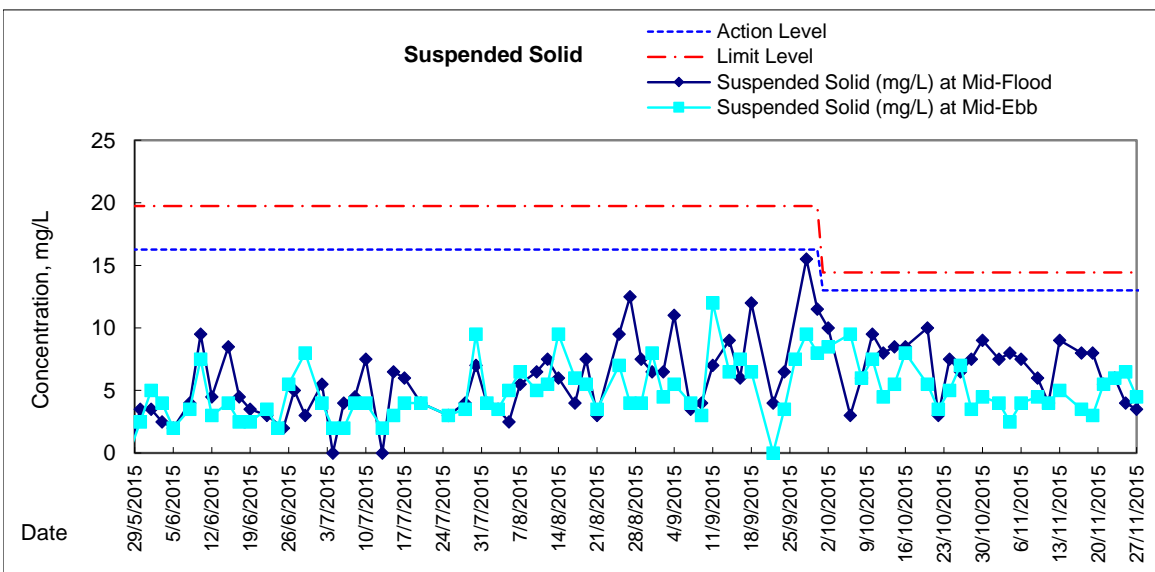
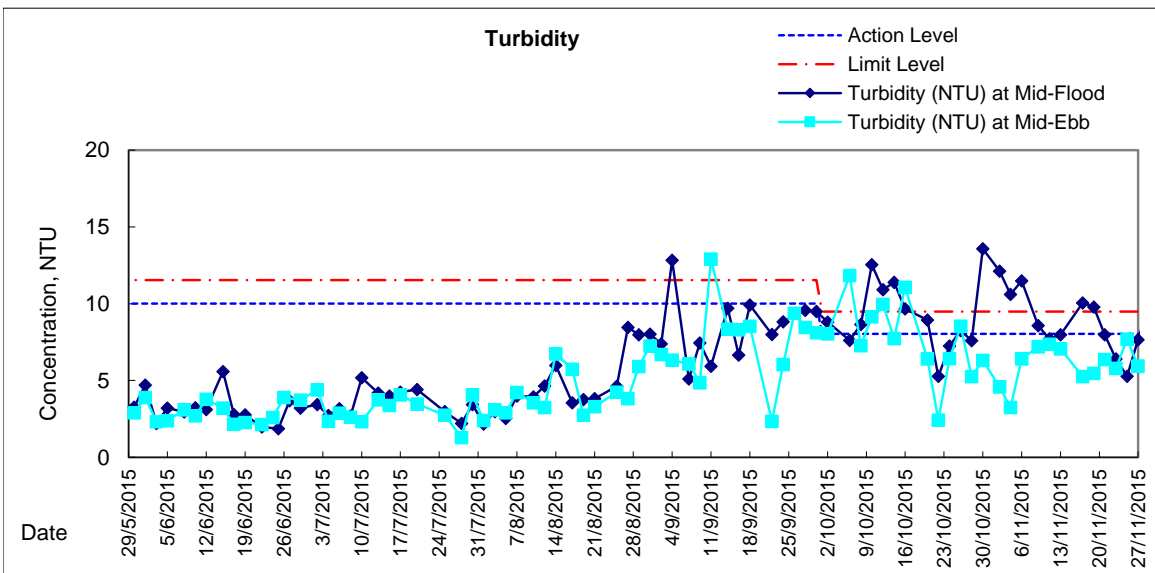
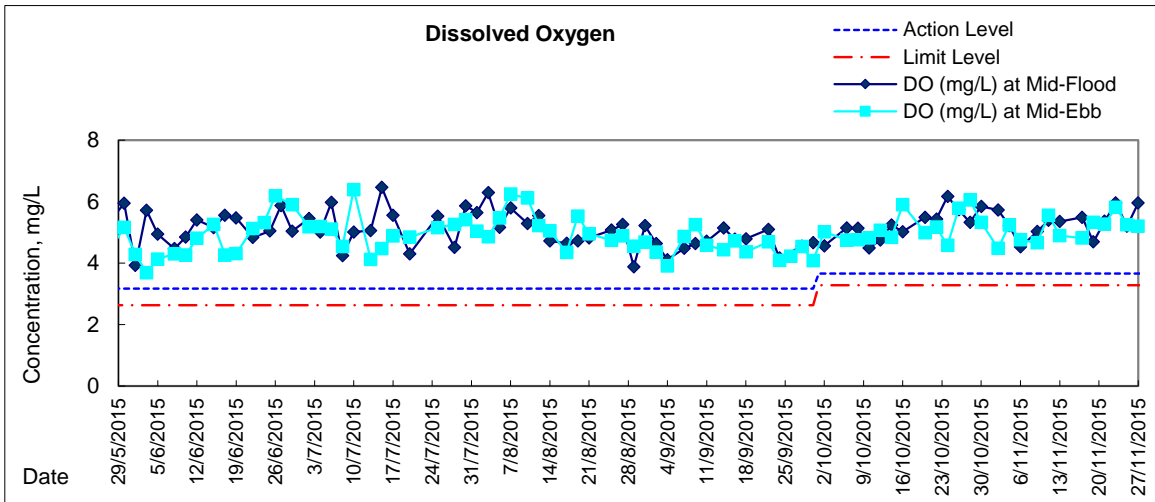


Graphic Presentation of Water Quality Result of P4 - SOC



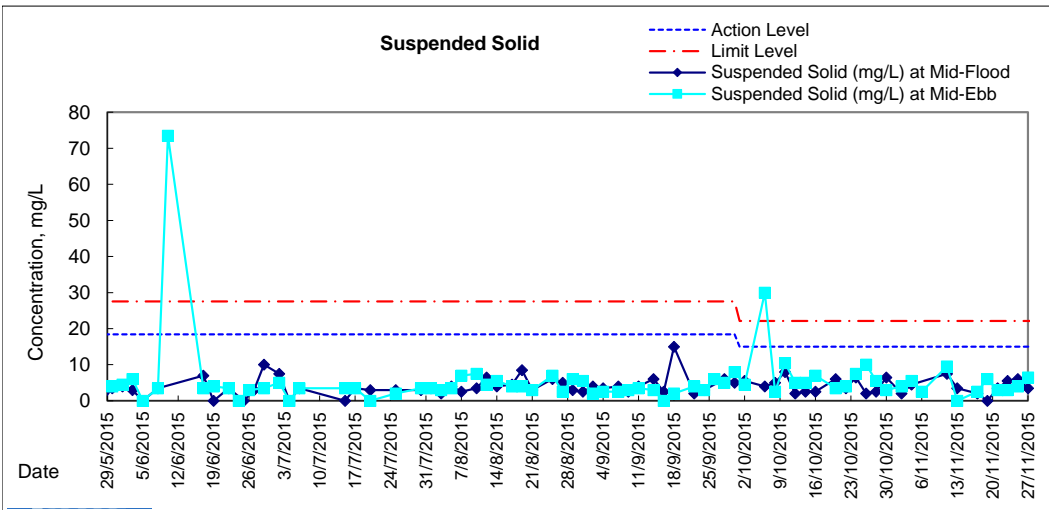
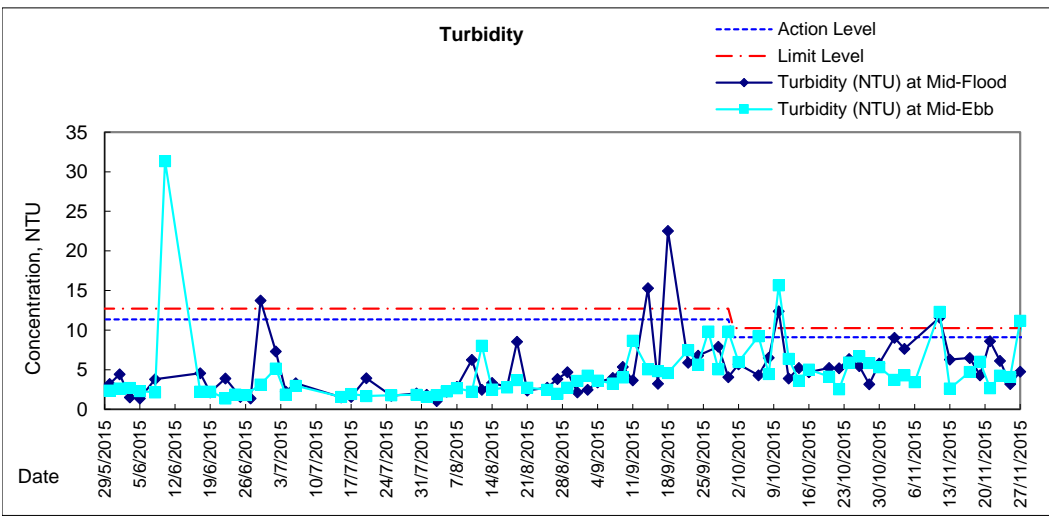
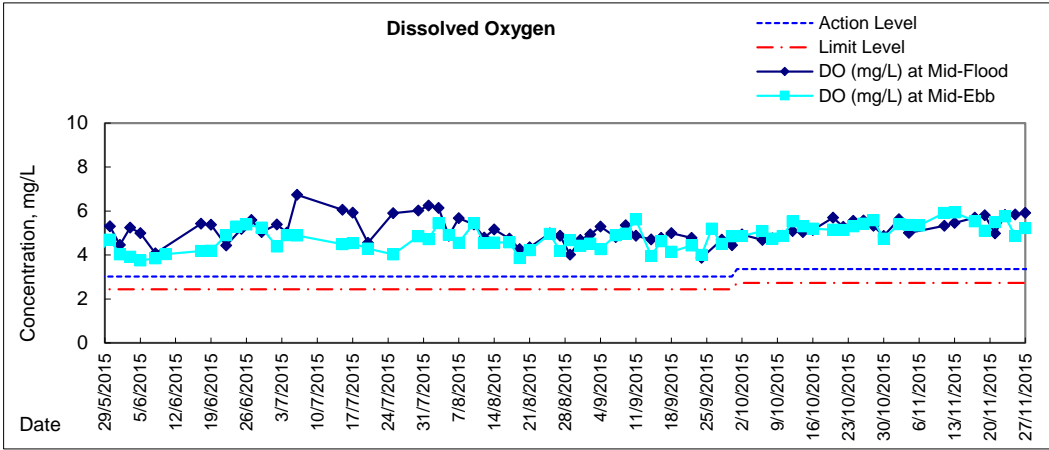


Graphic Presentation of Water Quality Result of RW21-P789 - GEC/CRC/SHK





Graphic Presentation of Water Quality Result of C7 - Windsor House





**Water Monitoring Result at C6 - Excelsior Hotel
Mid-Flood Tide**

Date	Time	Weater Condition	Sampling Depth		Water Temperature			pH			Salinity		DO Saturation		DO				
					°C			-			ppt		%		mg/L				
			m	Value	Average	Value	Average	Value	Average	Value	Average	Value	Average	Value	Average				
28/10/2015	-	Cloudy	Surface	-	-	-	-	-	-	-	-	-	-	-	-	-	-	-	
	18:15		Middle	1.5	26.80	26.80	26.8	8.33	8.33	8.3	30.81	30.81	30.8	68.4	68.7	68.6	4.60	4.62	4.61
	-		Bottom	-	-	-	-	-	-	-	-	-	-	-	-	-	-	-	-
30/10/2015	-	Fine	Surface	-	-	-	-	-	-	-	-	-	-	-	-	-	-	-	
	10:09		Middle	1.5	27.10	27.10	27.1	8.26	8.26	8.3	30.87	30.87	30.9	63.5	62.7	63.1	4.25	4.19	4.22
	-		Bottom	-	-	-	-	-	-	-	-	-	-	-	-	-	-	-	-
2/11/2015	-	Fine	Surface	-	-	-	-	-	-	-	-	-	-	-	-	-	-	-	
	12:10		Middle	1.5	26.80	26.80	26.8	8.32	8.32	8.3	30.08	30.08	30.1	60.8	61.5	61.2	4.11	4.16	4.14
	-		Bottom	-	-	-	-	-	-	-	-	-	-	-	-	-	-	-	-
4/11/2015	-	Fine	Surface	-	-	-	-	-	-	-	-	-	-	-	-	-	-	-	
	11:40		Middle	1.5	26.60	26.60	26.6	8.32	8.32	8.3	31.07	31.07	31.1	57.5	56.9	57.2	3.87	3.83	3.85
	-		Bottom	-	-	-	-	-	-	-	-	-	-	-	-	-	-	-	-
6/11/2015	-	Fine	Surface	-	-	-	-	-	-	-	-	-	-	-	-	-	-	-	
	16:20		Middle	1.5	26.10	26.10	26.1	8.31	8.31	8.3	30.42	30.42	30.4	62.6	62.2	62.4	4.27	4.25	4.26
	-		Bottom	-	-	-	-	-	-	-	-	-	-	-	-	-	-	-	-
9/11/2015	-	Fine	Surface	-	-	-	-	-	-	-	-	-	-	-	-	-	-	-	
	16:49		Middle	1.5	26.60	26.60	26.6	8.26	8.26	8.3	32.12	32.12	32.1	54.7	54.7	54.7	3.59	3.57	3.58
	-		Bottom	-	-	-	-	-	-	-	-	-	-	-	-	-	-	-	-
11/11/2015	-	Fine	Surface	-	-	-	-	-	-	-	-	-	-	-	-	-	-	-	
	18:10		Middle	1.5	25.60	25.60	25.6	8.33	8.33	8.3	31.55	31.55	31.6	63.7	64.1	63.9	4.36	4.39	4.38
	-		Bottom	-	-	-	-	-	-	-	-	-	-	-	-	-	-	-	-
13/11/2015	-	Cloudy	Surface	-	-	-	-	-	-	-	-	-	-	-	-	-	-	-	
	18:18		Middle	1.5	25.00	25.00	25.0	8.33	8.33	8.3	31.15	31.17	31.2	65.5	65.8	65.7	4.53	4.56	4.55
	-		Bottom	-	-	-	-	-	-	-	-	-	-	-	-	-	-	-	-
17/11/2015	-	Fine	Surface	-	-	-	-	-	-	-	-	-	-	-	-	-	-	-	
	11:45		Middle	1.5	26.60	26.00	26.3	8.28	8.28	8.3	30.88	30.88	30.9	59.0	60.9	60.0	3.97	4.08	4.03
	-		Bottom	-	-	-	-	-	-	-	-	-	-	-	-	-	-	-	-
19/11/2015	-	Fine	Surface	-	-	-	-	-	-	-	-	-	-	-	-	-	-	-	
	14:46		Middle	1.5	26.70	26.70	26.7	8.25	8.25	8.3	30.74	30.74	30.7	68.7	68.9	68.8	4.83	4.85	4.84
	-		Bottom	-	-	-	-	-	-	-	-	-	-	-	-	-	-	-	-
21/11/2015	-	Fine	Surface	-	-	-	-	-	-	-	-	-	-	-	-	-	-	-	
	11:24		Middle	1.5	25.80	25.80	25.8	8.26	8.26	8.3	31.03	31.03	31.0	54.1	54.2	54.2	3.70	3.70	3.70
	-		Bottom	-	-	-	-	-	-	-	-	-	-	-	-	-	-	-	-
23/11/2015	-	Fine	Surface	-	-	-	-	-	-	-	-	-	-	-	-	-	-	-	
	16:25		Middle	1.5	26.00	26.00	26.0	8.31	8.31	8.3	30.97	30.97	31.0	71.6	71.7	71.7	4.88	4.88	4.88
	-		Bottom	-	-	-	-	-	-	-	-	-	-	-	-	-	-	-	-
25/11/2015	17:50	Fine	Surface	1.0	25.20	25.20	25.2	8.36	8.36	8.4	31.05	31.05	31.1	69.0	69.0	69.0	4.76	4.77	4.77
	-		Middle	2.0	-	-	-	-	-	-	-	-	-	-	-	-	-	-	-
	17:52		Bottom	3.0	25.10	25.10	25.1	8.35	8.35	8.4	31.50	31.50	31.5	83.5	83.6	83.6	5.77	5.78	5.78
27/11/2015	-	Fine	Surface	-	-	-	-	-	-	-	-	-	-	-	-	-	-	-	
	17:28		Middle	1.5	22.00	22.00	22.0	8.42	8.42	8.4	31.83	31.83	31.8	78.1	77.9	78.0	5.69	5.67	5.68
	-		Bottom	-	-	-	-	-	-	-	-	-	-	-	-	-	-	-	-

Remarks:
Single underline denotes exceedance over Action Level.
Double underline denotes exceedance over Limit Level.



**Water Monitoring Result at Ex-WPCWA SW - South-western corners of ex-Public Cargo Works Area
Mid-Flood Tide**

Date	Time	Weater Condition	Sampling Depth		Water Temperature			pH			Salinity		DO Saturation		DO				
					°C			-			ppt		%		mg/L				
			m	Value	Average	Value	Average	Value	Average	Value	Average	Value	Average	Value	Average				
28/10/2015	-	Cloudy	Surface	-	-	-	-	-	-	-	-	-	-	-	-	-	-	-	
	20:25		Middle	1.5	26.30	26.30	26.3	8.29	8.29	8.3	29.66	29.67	29.7	63.6	63.8	63.7	4.37	4.36	4.37
	-		Bottom	-	-	-	-	-	-	-	-	-	-	-	-	-	-	-	-
30/10/2015	-	Fine	Surface	-	-	-	-	-	-	-	-	-	-	-	-	-	-	-	
	9:55		Middle	1.0	27.20	27.20	27.2	8.29	8.29	8.3	30.60	30.60	30.6	71.6	70.9	71.3	4.79	4.74	4.77
	-		Bottom	-	-	-	-	-	-	-	-	-	-	-	-	-	-	-	-
2/11/2015	-	Fine	Surface	-	-	-	-	-	-	-	-	-	-	-	-	-	-	-	
	11:52		Middle	1.0	26.40	26.40	26.4	8.36	8.36	8.4	27.44	27.44	27.4	48.1	48.2	48.2	3.36	3.33	<u>3.35</u>
	-		Bottom	-	-	-	-	-	-	-	-	-	-	-	-	-	-	-	-
4/11/2015	-	Fine	Surface	-	-	-	-	-	-	-	-	-	-	-	-	-	-	-	
	15:32		Middle	1.0	26.30	26.30	26.3	8.35	8.35	8.4	31.53	31.54	31.5	64.3	63.6	64.0	4.35	4.30	4.33
	-		Bottom	-	-	-	-	-	-	-	-	-	-	-	-	-	-	-	-
6/11/2015	-	Fine	Surface	-	-	-	-	-	-	-	-	-	-	-	-	-	-	-	
	16:08		Middle	1.0	26.10	26.10	26.1	8.37	8.37	8.4	29.70	29.70	29.7	60.6	59.7	60.2	4.15	4.09	4.12
	-		Bottom	-	-	-	-	-	-	-	-	-	-	-	-	-	-	-	-
9/11/2015	-	Fine	Surface	-	-	-	-	-	-	-	-	-	-	-	-	-	-	-	
	16:36		Middle	1.0	26.70	26.70	26.7	8.31	8.31	8.3	31.14	31.14	31.1	64.0	65.3	64.7	4.29	4.37	4.33
	-		Bottom	-	-	-	-	-	-	-	-	-	-	-	-	-	-	-	-
11/11/2015	-	Fine	Surface	-	-	-	-	-	-	-	-	-	-	-	-	-	-	-	
	16:50		Middle	1.0	25.70	25.70	25.7	8.31	8.31	8.3	31.27	31.27	31.3	80.0	78.3	79.2	5.48	5.37	5.43
	-		Bottom	-	-	-	-	-	-	-	-	-	-	-	-	-	-	-	-
13/11/2015	-	Cloudy	Surface	-	-	-	-	-	-	-	-	-	-	-	-	-	-	-	
	19:03		Middle	1.5	25.00	25.00	25.0	8.35	8.35	8.4	30.99	30.99	31.0	66.0	65.5	65.8	4.78	4.54	4.66
	-		Bottom	-	-	-	-	-	-	-	-	-	-	-	-	-	-	-	-
17/11/2015	-	Fine	Surface	-	-	-	-	-	-	-	-	-	-	-	-	-	-	-	
	11:30		Middle	1.0	26.20	26.20	26.2	8.32	8.32	8.3	31.08	31.08	31.1	65.6	65.9	65.8	4.44	4.47	4.46
	-		Bottom	-	-	-	-	-	-	-	-	-	-	-	-	-	-	-	-
19/11/2015	-	Fine	Surface	-	-	-	-	-	-	-	-	-	-	-	-	-	-	-	
	14:25		Middle	1.0	26.20	26.20	26.2	8.28	8.27	8.3	30.98	30.98	31.0	61.7	61.0	61.4	4.19	4.14	4.17
	-		Bottom	-	-	-	-	-	-	-	-	-	-	-	-	-	-	-	-
21/11/2015	-	Fine	Surface	-	-	-	-	-	-	-	-	-	-	-	-	-	-	-	
	12:10		Middle	1.5	25.70	25.70	25.7	8.27	8.27	8.3	31.37	31.37	31.4	65.0	63.1	64.1	4.44	4.31	4.38
	-		Bottom	-	-	-	-	-	-	-	-	-	-	-	-	-	-	-	-
23/11/2015	-	Fine	Surface	-	-	-	-	-	-	-	-	-	-	-	-	-	-	-	
	16:03		Middle	1.0	26.10	26.10	26.1	8.34	8.34	8.3	31.13	31.13	31.1	75.7	75.3	75.5	5.14	5.12	5.13
	-		Bottom	-	-	-	-	-	-	-	-	-	-	-	-	-	-	-	-
25/11/2015	-	Fine	Surface	-	-	-	-	-	-	-	-	-	-	-	-	-	-	-	
	16:20		Middle	1.0	25.60	25.60	25.6	8.34	8.34	8.3	31.59	31.59	31.6	64.2	65.3	64.8	4.39	4.47	4.43
	-		Bottom	-	-	-	-	-	-	-	-	-	-	-	-	-	-	-	-
27/11/2015	-	Fine	Surface	-	-	-	-	-	-	-	-	-	-	-	-	-	-	-	
	18:15		Middle	1.5	21.90	21.90	21.9	8.42	8.42	8.4	30.60	30.60	30.6	76.8	74.7	75.8	5.86	5.56	5.71
	-		Bottom	-	-	-	-	-	-	-	-	-	-	-	-	-	-	-	-

Remarks:
Single underline denotes exceedance over Action Level.
Double underline denotes exceedance over Limit Level.



**Water Monitoring Result at Ex-WPCWA SE - South-eastern corners of ex-Public Cargo Works Area
Mid-Flood Tide**

Date	Time	Weater Condition	Sampling Depth		Water Temperature		pH		Salinity		DO Saturation		DO		
					°C		-		ppt		%		mg/L		
			m	Value	Average	Value	Average	Value	Average	Value	Average	Value	Average		
28/10/2015	-	Cloudy	Surface	-	-	-	-	-	-	-	-	-	-	-	-
	-		Middle	-	-	-	-	-	-	-	-	-	-	-	-
	-		Bottom	-	-	-	-	-	-	-	-	-	-	-	-
30/10/2015	-	Fine	Surface	-	-	-	-	-	-	-	-	-	-	-	-
	-		Middle	-	-	-	-	-	-	-	-	-	-	-	-
	-		Bottom	-	-	-	-	-	-	-	-	-	-	-	-
2/11/2015	-	Fine	Surface	-	-	-	-	-	-	-	-	-	-	-	-
	-		Middle	-	-	-	-	-	-	-	-	-	-	-	-
	-		Bottom	-	-	-	-	-	-	-	-	-	-	-	-
4/11/2015	-	Fine	Surface	-	-	-	-	-	-	-	-	-	-	-	-
	-		Middle	-	-	-	-	-	-	-	-	-	-	-	-
	-		Bottom	-	-	-	-	-	-	-	-	-	-	-	-
6/11/2015	-	Fine	Surface	-	-	-	-	-	-	-	-	-	-	-	-
	-		Middle	-	-	-	-	-	-	-	-	-	-	-	-
	-		Bottom	-	-	-	-	-	-	-	-	-	-	-	-
9/11/2015	-	Fine	Surface	-	-	-	-	-	-	-	-	-	-	-	-
	-		Middle	-	-	-	-	-	-	-	-	-	-	-	-
	-		Bottom	-	-	-	-	-	-	-	-	-	-	-	-
11/11/2015	-	Fine	Surface	-	-	-	-	-	-	-	-	-	-	-	-
	-		Middle	-	-	-	-	-	-	-	-	-	-	-	-
	-		Bottom	-	-	-	-	-	-	-	-	-	-	-	-
13/11/2015	-	Cloudy	Surface	-	-	-	-	-	-	-	-	-	-	-	-
	-		Middle	-	-	-	-	-	-	-	-	-	-	-	-
	-		Bottom	-	-	-	-	-	-	-	-	-	-	-	-
17/11/2015	-	Fine	Surface	-	-	-	-	-	-	-	-	-	-	-	-
	-		Middle	-	-	-	-	-	-	-	-	-	-	-	-
	-		Bottom	-	-	-	-	-	-	-	-	-	-	-	-
19/11/2015	-	Fine	Surface	-	-	-	-	-	-	-	-	-	-	-	-
	-		Middle	-	-	-	-	-	-	-	-	-	-	-	-
	-		Bottom	-	-	-	-	-	-	-	-	-	-	-	-
21/11/2015	-	Fine	Surface	-	-	-	-	-	-	-	-	-	-	-	-
	-		Middle	-	-	-	-	-	-	-	-	-	-	-	-
	-		Bottom	-	-	-	-	-	-	-	-	-	-	-	-
23/11/2015	-	Fine	Surface	-	-	-	-	-	-	-	-	-	-	-	-
	-		Middle	-	-	-	-	-	-	-	-	-	-	-	-
	-		Bottom	-	-	-	-	-	-	-	-	-	-	-	-
25/11/2015	-	Fine	Surface	-	-	-	-	-	-	-	-	-	-	-	-
	-		Middle	-	-	-	-	-	-	-	-	-	-	-	-
	-		Bottom	-	-	-	-	-	-	-	-	-	-	-	-
27/11/2015	-	Fine	Surface	-	-	-	-	-	-	-	-	-	-	-	-
	-		Middle	-	-	-	-	-	-	-	-	-	-	-	-
	-		Bottom	-	-	-	-	-	-	-	-	-	-	-	-

Remarks:
 Single underline denotes exceedance over Action Level.
 Double underline denotes exceedance over Limit Level.



**Water Monitoring Result at C6 - Excelsior Hotel
Mid-Ebb Tide**

Date	Time	Weater Condition	Sampling Depth		Water Temperature			pH		Salinity		DO Saturation		DO					
					°C			-		ppt		%		mg/L					
			m	Value	Average	Value	Average	Value	Average	Value	Average	Value	Average						
28/10/2015	-	Fine	Surface	-	-	-	-	-	-	-	-	-	-	-	-	-	-	-	
	13:01		Middle	1.0	27.60	27.60	27.6	8.24	8.24	8.2	30.57	30.57	30.6	70.5	71.6	71.1	4.65	4.75	4.70
	-		Bottom	-	-	-	-	-	-	-	-	-	-	-	-	-	-	-	-
30/10/2015	-	Fine	Surface	-	-	-	-	-	-	-	-	-	-	-	-	-	-	-	-
	15:29		Middle	1.5	27.90	27.90	27.9	8.25	8.25	8.3	28.80	28.80	28.8	52.7	52.0	52.4	3.52	3.47	3.50
	-		Bottom	-	-	-	-	-	-	-	-	-	-	-	-	-	-	-	-
2/11/2015	-	Cloudy	Surface	-	-	-	-	-	-	-	-	-	-	-	-	-	-	-	-
	4:05		Middle	1.0	23.20	23.20	23.2	8.10	8.10	8.1	26.01	26.01	26.0	58.3	58.5	58.4	4.16	4.17	4.17
	-		Bottom	-	-	-	-	-	-	-	-	-	-	-	-	-	-	-	-
4/11/2015	-	Cloudy	Surface	-	-	-	-	-	-	-	-	-	-	-	-	-	-	-	-
	4:25		Middle	1.5	24.70	24.70	24.7	8.31	8.31	8.3	26.00	26.00	26.0	46.2	46.8	46.5	3.33	3.36	3.35
	-		Bottom	-	-	-	-	-	-	-	-	-	-	-	-	-	-	-	-
6/11/2015	-	Fine	Surface	-	-	-	-	-	-	-	-	-	-	-	-	-	-	-	-
	10:00		Middle	1.0	26.10	26.10	26.1	8.33	8.33	8.3	31.33	31.33	31.3	72.7	73.3	73.0	4.93	4.98	4.96
	-		Bottom	-	-	-	-	-	-	-	-	-	-	-	-	-	-	-	-
9/11/2015	-	Fine	Surface	-	-	-	-	-	-	-	-	-	-	-	-	-	-	-	-
	11:37		Middle	1.5	26.80	26.80	26.8	8.11	8.11	8.1	31.11	31.11	31.1	66.4	65.8	66.1	4.46	4.42	4.44
	-		Bottom	-	-	-	-	-	-	-	-	-	-	-	-	-	-	-	-
11/11/2015	-	Cloudy	Surface	-	-	-	-	-	-	-	-	-	-	-	-	-	-	-	-
	12:26		Middle	1.5	26.11	26.11	26.1	8.35	8.35	8.4	31.99	31.99	32.0	73.6	74.2	73.9	4.98	5.02	5.00
	-		Bottom	-	-	-	-	-	-	-	-	-	-	-	-	-	-	-	-
13/11/2015	-	Cloudy	Surface	-	-	-	-	-	-	-	-	-	-	-	-	-	-	-	-
	14:45		Middle	1.5	25.70	25.70	25.7	8.36	8.36	8.4	31.52	31.52	31.5	76.7	75.8	76.3	5.23	5.17	5.20
	-		Bottom	-	-	-	-	-	-	-	-	-	-	-	-	-	-	-	-
17/11/2015	-	Cloudy	Surface	-	-	-	-	-	-	-	-	-	-	-	-	-	-	-	-
	2:10		Middle	1.5	25.60	25.60	25.6	8.29	8.29	8.3	28.29	28.29	28.3	57.9	57.3	57.6	4.18	4.14	4.16
	-		Bottom	-	-	-	-	-	-	-	-	-	-	-	-	-	-	-	-
19/11/2015	-	Cloudy	Surface	-	-	-	-	-	-	-	-	-	-	-	-	-	-	-	-
	4:39		Middle	1.5	25.60	25.60	25.6	8.06	8.06	8.1	27.64	27.64	27.6	56.6	56.9	56.8	3.98	4.01	4.00
	-		Bottom	-	-	-	-	-	-	-	-	-	-	-	-	-	-	-	-
21/11/2015	-	Cloudy	Surface	-	-	-	-	-	-	-	-	-	-	-	-	-	-	-	-
	19:25		Middle	1.5	25.20	25.20	25.2	8.21	8.21	8.2	31.60	31.60	31.6	65.1	65.9	65.5	4.48	4.54	4.51
	-		Bottom	-	-	-	-	-	-	-	-	-	-	-	-	-	-	-	-
23/11/2015	-	Fine	Surface	-	-	-	-	-	-	-	-	-	-	-	-	-	-	-	-
	11:45		Middle	1.5	26.20	26.20	26.2	8.30	8.30	8.3	31.35	31.35	31.4	70.9	71.3	71.1	4.82	4.83	4.83
	-		Bottom	-	-	-	-	-	-	-	-	-	-	-	-	-	-	-	-
25/11/2015	-	Fine	Surface	-	-	-	-	-	-	-	-	-	-	-	-	-	-	-	-
	11:51		Middle	1.5	25.50	25.50	25.5	8.27	8.27	8.3	31.30	31.30	31.3	68.0	65.7	66.9	4.63	4.50	4.57
	-		Bottom	-	-	-	-	-	-	-	-	-	-	-	-	-	-	-	-
27/11/2015	12:02	Fine	Surface	1	23.60	23.60	23.6	8.31	8.31	8.3	32.28	32.28	32.3	63.7	62.5	63.1	4.48	4.40	4.44
	-		Middle	2	-	-	-	-	-	-	-	-	-	-	-	-	-	-	-
	12:04		Bottom	3	23.70	23.70	23.7	8.33	8.33	8.3	32.20	32.20	32.2	76.9	75.9	76.4	5.41	5.34	5.38

Remarks:
Single underline denotes exceedance over Action Level.
Double underline denotes exceedance over Limit Level.



**Water Monitoring Result at Ex-WPCWA SW - South-western corners of ex-Public Cargo Works Area
Mid-Ebb Tide**

Date	Time	Weater Condition	Sampling Depth		Water Temperature			pH			Salinity		DO Saturation		DO				
					°C			-			ppt		%		mg/L				
			m	Value	Average	Value	Average	Value	Average	Value	Average	Value	Average	Value	Average				
28/10/2015	-	Fine	Surface	-	-	-	-	-	-	-	-	-	-	-	-	-	-	-	
	11:58		Middle	1.0	27.10	27.10	27.1	8.44	8.44	8.4	19.56	19.56	19.6	30.7	29.4	30.1	2.19	2.10	<u>2.15</u>
	-		Bottom	-	-	-	-	-	-	-	-	-	-	-	-	-	-	-	-
30/10/2015	-	z	Surface	-	-	-	-	-	-	-	-	-	-	-	-	-	-	-	-
	15:15		Middle	1.0	26.80	26.80	26.8	8.55	8.55	8.6	14.71	14.71	14.7	36.6	36.7	36.7	2.70	2.70	<u>2.70</u>
	-		Bottom	-	-	-	-	-	-	-	-	-	-	-	-	-	-	-	-
2/11/2015	-	Cloudy	Surface	-	-	-	-	-	-	-	-	-	-	-	-	-	-	-	-
	5:26		Middle	1.0	23.00	23.00	23.0	8.17	8.17	8.2	28.00	28.00	28.0	57.8	56.9	57.4	4.13	4.07	4.10
	-		Bottom	-	-	-	-	-	-	-	-	-	-	-	-	-	-	-	-
4/11/2015	-	Cloudy	Surface	-	-	-	-	-	-	-	-	-	-	-	-	-	-	-	-
	5:37		Middle	1.5	24.60	24.60	24.6	8.07	8.07	8.1	23.46	23.44	23.5	53.6	53.8	53.7	4.00	4.01	4.01
	-		Bottom	-	-	-	-	-	-	-	-	-	-	-	-	-	-	-	-
6/11/2015	-	Fine	Surface	-	-	-	-	-	-	-	-	-	-	-	-	-	-	-	-
	9:40		Middle	1.0	25.80	25.80	25.8	8.38	8.38	8.4	30.82	30.82	30.8	69.5	67.1	68.3	4.76	4.60	4.68
	-		Bottom	-	-	-	-	-	-	-	-	-	-	-	-	-	-	-	-
9/11/2015	-	Fine	Surface	-	-	-	-	-	-	-	-	-	-	-	-	-	-	-	-
	11:25		Middle	1.0	26.60	26.60	26.6	8.33	8.33	8.3	24.77	24.77	24.8	50.2	49.0	49.6	3.50	3.42	<u>3.46</u>
	-		Bottom	-	-	-	-	-	-	-	-	-	-	-	-	-	-	-	-
11/11/2015	-	Cloudy	Surface	-	-	-	-	-	-	-	-	-	-	-	-	-	-	-	-
	12:05		Middle	1.0	26.80	26.80	26.8	8.11	8.11	8.1	24.11	24.11	24.1	58.5	58.0	58.3	3.95	3.92	3.94
	-		Bottom	-	-	-	-	-	-	-	-	-	-	-	-	-	-	-	-
13/11/2015	-	Cloudy	Surface	-	-	-	-	-	-	-	-	-	-	-	-	-	-	-	-
	14:23		Middle	1.0	25.70	25.70	25.7	8.41	8.41	8.4	32.13	32.13	32.1	73.1	73.5	73.3	4.97	5.00	4.99
	-		Bottom	-	-	-	-	-	-	-	-	-	-	-	-	-	-	-	-
17/11/2015	-	Cloudy	Surface	-	-	-	-	-	-	-	-	-	-	-	-	-	-	-	-
	2:40		Middle	1.5	25.50	25.50	25.5	8.32	8.32	8.3	30.14	30.14	30.1	65.7	63.0	64.4	4.33	4.34	4.34
	-		Bottom	-	-	-	-	-	-	-	-	-	-	-	-	-	-	-	-
19/11/2015	-	Cloudy	Surface	-	-	-	-	-	-	-	-	-	-	-	-	-	-	-	-
	6:40		Middle	1.0	25.60	25.60	25.6	8.21	8.21	8.2	17.77	17.76	17.8	60.4	61.0	60.7	4.15	4.21	4.18
	-		Bottom	-	-	-	-	-	-	-	-	-	-	-	-	-	-	-	-
21/11/2015	-	Cloudy	Surface	-	-	-	-	-	-	-	-	-	-	-	-	-	-	-	-
	19:04		Middle	1.5	25.20	25.20	25.2	8.19	8.19	8.2	29.39	29.39	29.4	59.4	60.2	59.8	4.15	4.19	4.17
	-		Bottom	-	-	-	-	-	-	-	-	-	-	-	-	-	-	-	-
23/11/2015	-	Fine	Surface	-	-	-	-	-	-	-	-	-	-	-	-	-	-	-	-
	11:25		Middle	1.0	25.90	25.90	25.9	8.34	8.34	8.3	30.13	30.13	30.1	63.1	61.2	62.2	4.31	4.18	4.25
	-		Bottom	-	-	-	-	-	-	-	-	-	-	-	-	-	-	-	-
25/11/2015	-	Fine	Surface	-	-	-	-	-	-	-	-	-	-	-	-	-	-	-	-
	11:38		Middle	1.0	25.50	25.50	25.5	8.32	8.32	8.3	28.43	28.43	28.4	56.6	55.8	56.2	3.95	3.89	3.92
	-		Bottom	-	-	-	-	-	-	-	-	-	-	-	-	-	-	-	-
27/11/2015	-	Fine	Surface	-	-	-	-	-	-	-	-	-	-	-	-	-	-	-	-
	15:00		Middle	1.5	24.00	24.00	24.0	8.34	8.34	8.3	31.78	31.78	31.8	78.7	78.9	78.8	5.53	5.54	5.54
	-		Bottom	-	-	-	-	-	-	-	-	-	-	-	-	-	-	-	-

Remarks:
Single underline denotes exceedance over Action Level.
Double underline denotes exceedance over Limit Level.



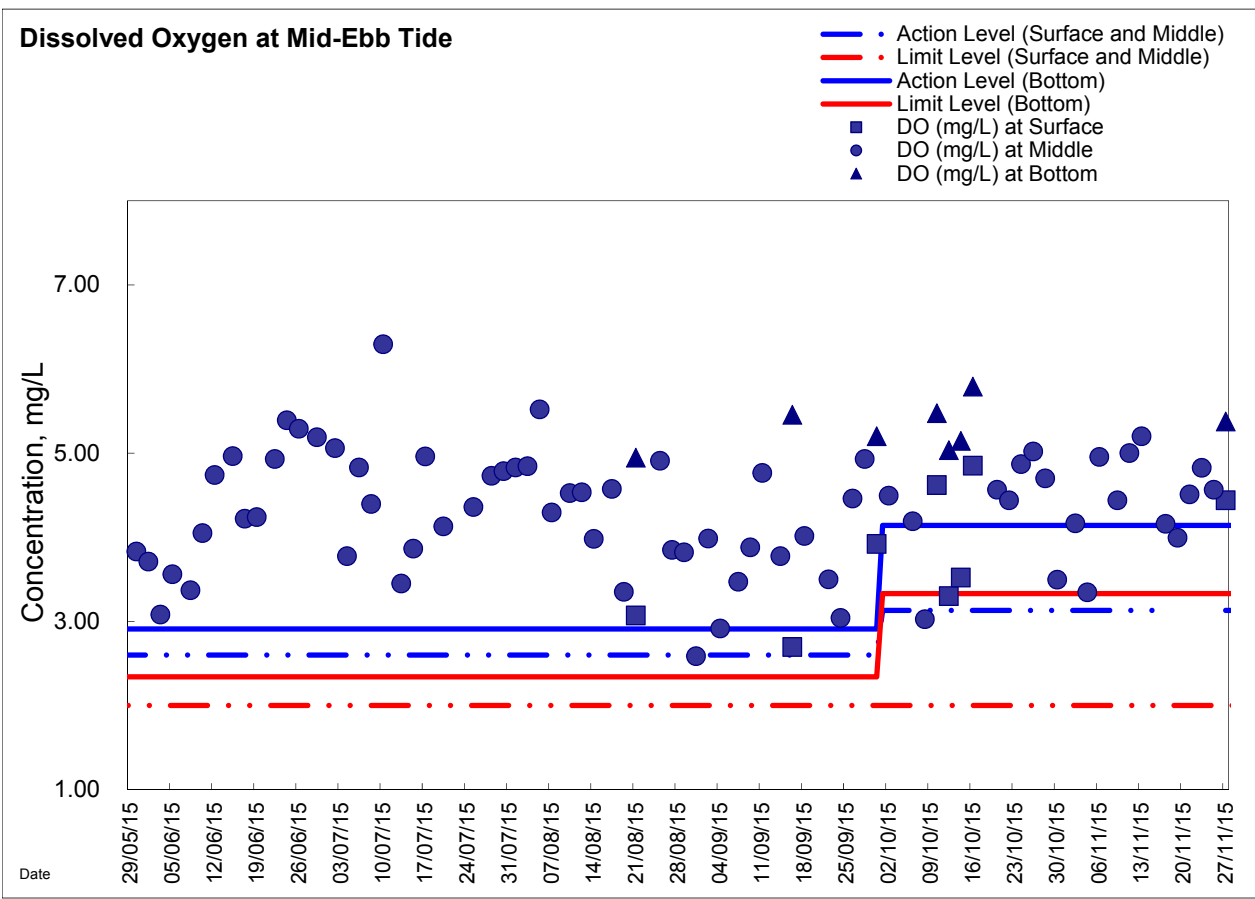
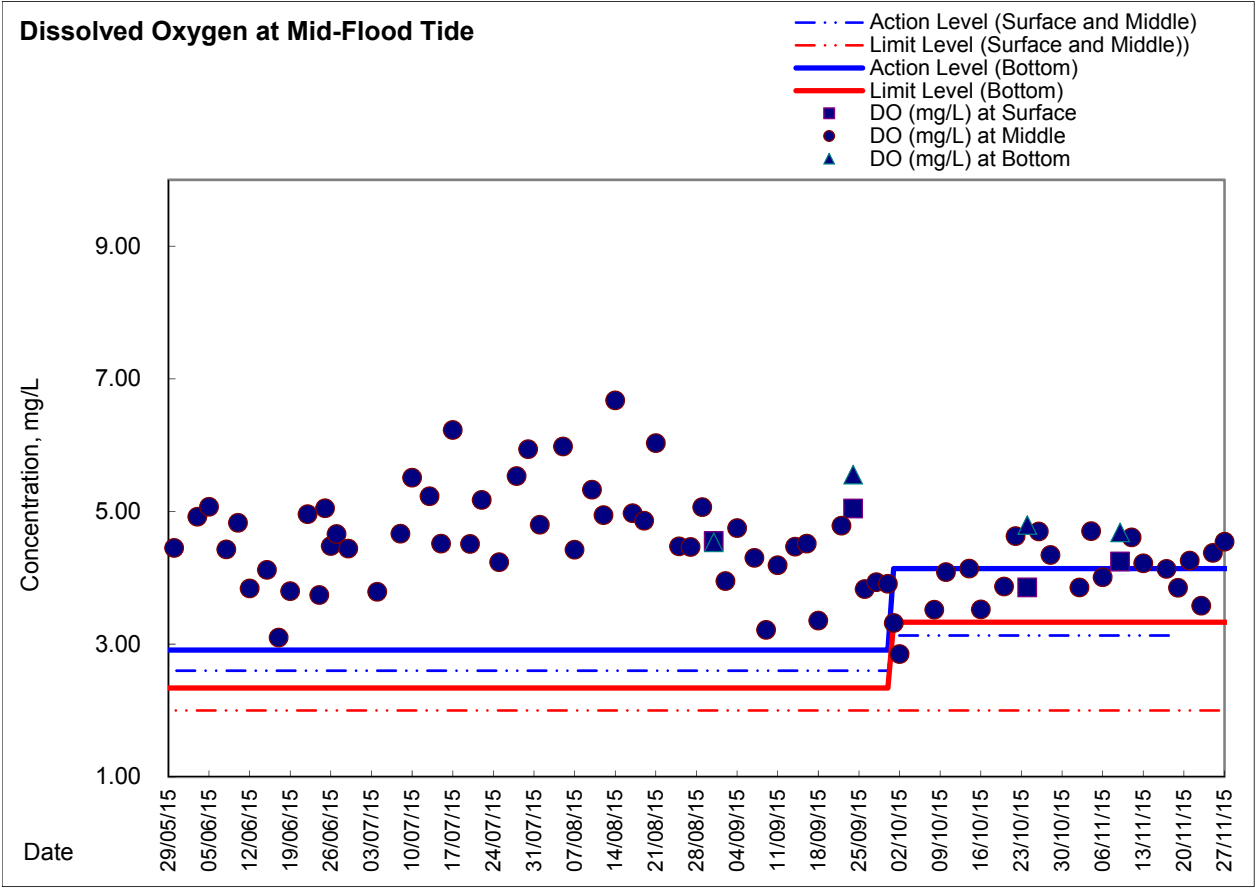
**Water Monitoring Result at Ex-WPCWA SE - South-eastern corners of ex-Public Cargo Works Area
Mid-Ebb Tide**

Date	Time	Weater Condition	Sampling Depth		Water Temperature			pH		Salinity		DO Saturation		DO		
					°C			-		ppt		%		mg/L		
			m	Value	Average	Value	Average	Value	Average	Value	Average	Value	Average			
28/10/2015	-	Fine	Surface	-	-	-	-	-	-	-	-	-	-	-	-	-
	-		Middle	-	-	-	-	-	-	-	-	-	-	-	-	-
	-		Bottom	-	-	-	-	-	-	-	-	-	-	-	-	-
30/10/2015	-	Fine	Surface	-	-	-	-	-	-	-	-	-	-	-	-	-
	-		Middle	-	-	-	-	-	-	-	-	-	-	-	-	
	-		Bottom	-	-	-	-	-	-	-	-	-	-	-	-	
2/11/2015	-	Cloudy	Surface	-	-	-	-	-	-	-	-	-	-	-	-	-
	-		Middle	-	-	-	-	-	-	-	-	-	-	-	-	
	-		Bottom	-	-	-	-	-	-	-	-	-	-	-	-	
4/11/2015	-	Cloudy	Surface	-	-	-	-	-	-	-	-	-	-	-	-	-
	-		Middle	-	-	-	-	-	-	-	-	-	-	-	-	
	-		Bottom	-	-	-	-	-	-	-	-	-	-	-	-	
6/11/2015	-	Fine	Surface	-	-	-	-	-	-	-	-	-	-	-	-	-
	-		Middle	-	-	-	-	-	-	-	-	-	-	-	-	
	-		Bottom	-	-	-	-	-	-	-	-	-	-	-	-	
9/11/2015	-	Fine	Surface	-	-	-	-	-	-	-	-	-	-	-	-	-
	-		Middle	-	-	-	-	-	-	-	-	-	-	-	-	
	-		Bottom	-	-	-	-	-	-	-	-	-	-	-	-	
11/11/2015	-	Cloudy	Surface	-	-	-	-	-	-	-	-	-	-	-	-	-
	-		Middle	-	-	-	-	-	-	-	-	-	-	-	-	
	-		Bottom	-	-	-	-	-	-	-	-	-	-	-	-	
13/11/2015	-	Cloudy	Surface	-	-	-	-	-	-	-	-	-	-	-	-	-
	-		Middle	-	-	-	-	-	-	-	-	-	-	-	-	
	-		Bottom	-	-	-	-	-	-	-	-	-	-	-	-	
17/11/2015	-	Cloudy	Surface	-	-	-	-	-	-	-	-	-	-	-	-	-
	-		Middle	-	-	-	-	-	-	-	-	-	-	-	-	
	-		Bottom	-	-	-	-	-	-	-	-	-	-	-	-	
19/11/2015	-	Cloudy	Surface	-	-	-	-	-	-	-	-	-	-	-	-	-
	-		Middle	-	-	-	-	-	-	-	-	-	-	-	-	
	-		Bottom	-	-	-	-	-	-	-	-	-	-	-	-	
21/11/2015	-	Cloudy	Surface	-	-	-	-	-	-	-	-	-	-	-	-	-
	-		Middle	-	-	-	-	-	-	-	-	-	-	-	-	
	-		Bottom	-	-	-	-	-	-	-	-	-	-	-	-	
23/11/2015	-	Fine	Surface	-	-	-	-	-	-	-	-	-	-	-	-	-
	-		Middle	-	-	-	-	-	-	-	-	-	-	-	-	
	-		Bottom	-	-	-	-	-	-	-	-	-	-	-	-	
25/11/2015	-	Fine	Surface	-	-	-	-	-	-	-	-	-	-	-	-	-
	-		Middle	-	-	-	-	-	-	-	-	-	-	-	-	
	-		Bottom	-	-	-	-	-	-	-	-	-	-	-	-	
27/11/2015	-	Fine	Surface	-	-	-	-	-	-	-	-	-	-	-	-	-
	-		Middle	-	-	-	-	-	-	-	-	-	-	-	-	
	-		Bottom	-	-	-	-	-	-	-	-	-	-	-	-	

Remarks:
 Single underline denotes exceedance over Action Level.
 Double underline denotes exceedance over Limit Level.

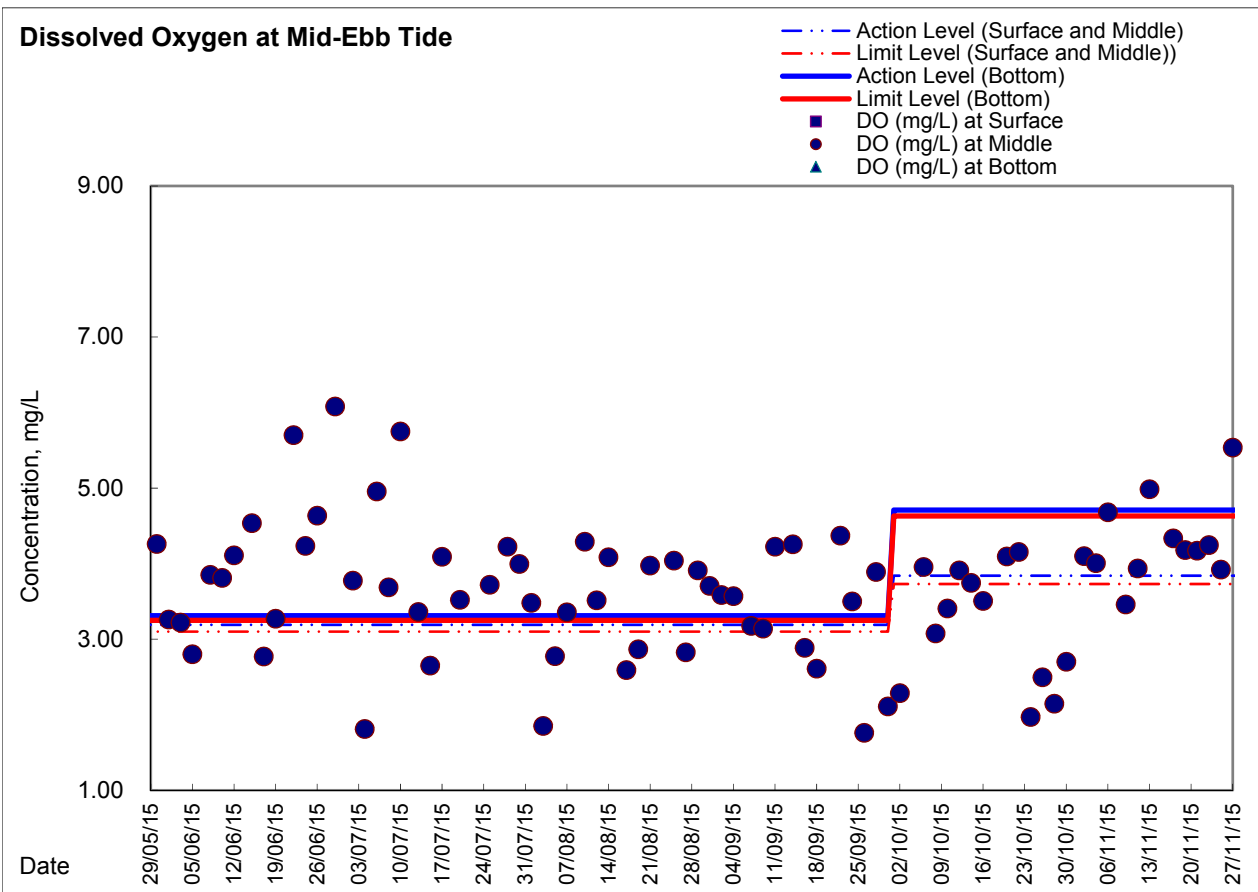
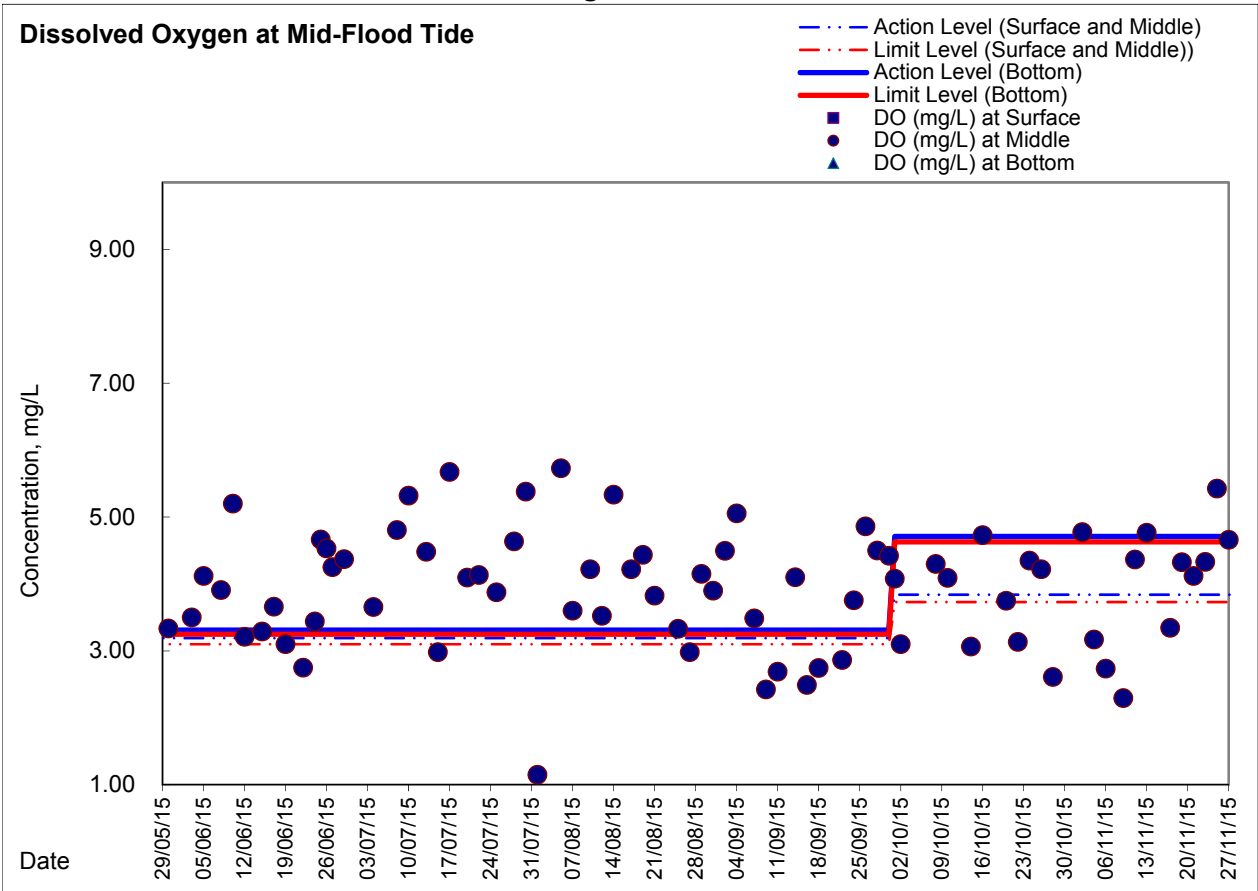


Graphic Presentation of Enhanced Water Monitoring Results (DO) at C6 - Excelsior Hotel





Graphic Presentation of Enhanced Water Monitoring Results (DO) at Ex-WPCWA SW - South-western corners of ex-Public Cargo Works Area





Graphic Presentation of Enhanced Water Monitoring Results (DO) at Ex-WPCWA SE - South-eastern corners of ex-Public Cargo Works Area

